

Anti-CLEC5A/MDL1 Antibody (R3Y52)

Summary

Catalog No.	RHK16001
Clone ID	R3Y52
Host species	Mouse
Tested applications	ELISA: 1:10000, FCM: 1:200-1:400, WB: 1:500-1:2000
Species reactivity	Human
Form	Liquid
Storage buffer	0.01M PBS, pH 7.4, 0.05% Sodium Azide.
Concentration	1 mg/ml
Purity	>95% as determined by SDS-PAGE.
Clonality	Monoclonal
Isotype	IgG1
Applications	ELISA, FCM, WB
Target	C-type lectin superfamily member 5, C-type lectin domain family 5 member A, CLEC5A, MDL-1, CLECSF5, MDL1, Myeloid DAP12-associating lectin 1
Purification	Protein A/G purified from cell culture supernatant.
Endotoxin level	Please contact with the lab for this information.
Accession	Q9NY25

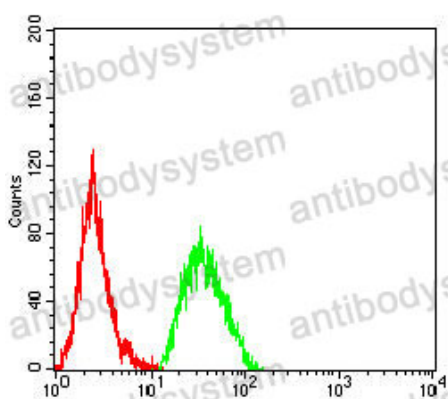
Stability and Storage

Use a manual defrost freezer and avoid repeated freeze-thaw cycles.

Store at 4°C short term (1-2 weeks). Store at -20°C 12 months. Store at -80°C long term.

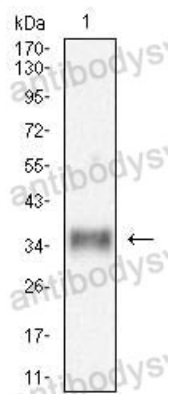
Note

For research use only.

Data Image

Flow Cytometry

Flow cytometric analysis of U937 cells using CLEC5A mouse mAb (green) and negative control (red).



Western blot

Western blot analysis using CLEC5A mouse mAb against THP-1 (1) cell lysate.