

Anti-SCARB1/SR-BI/CLA-1/SRB1 Antibody (R3Y43)

Summary

Catalog No.	RHK08803
Clone ID	R3Y43
Host species	Mouse
Tested applications	ELISA: 1:10000, FCM: 1:200-1:400, IHC: 1:200-1:1000, WB: 1:500-1:2000
Species reactivity	Human, Mouse
Form	Liquid
Storage buffer	0.01M PBS, pH 7.4, 0.05% Sodium Azide.
Concentration	1 mg/ml
Purity	>95% as determined by SDS-PAGE.
Clonality	Monoclonal
Isotype	IgG2a
Applications	ELISA, FCM, IHC, WB
Target	CD36, CLA1, CD36 antigen-like 1, CD36L1, SRB1, Collagen type I receptor, thrombospondin receptor-like 1, SCARB1, Scavenger receptor class B member 1, CLA-1, SR-BI, CD36 and LIMPII analogous 1
Purification	Protein A/G purified from cell culture supernatant.
Endotoxin level	Please contact with the lab for this information.
Accession	Q8WTV0

Stability and Storage

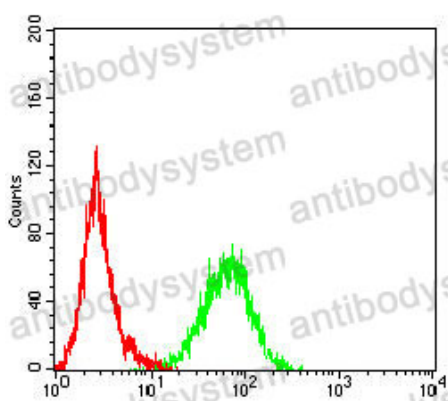
Use a manual defrost freezer and avoid repeated freeze-thaw cycles.

Store at 4°C short term (1-2 weeks). Store at -20°C 12 months. Store at -80°C long term.

Note

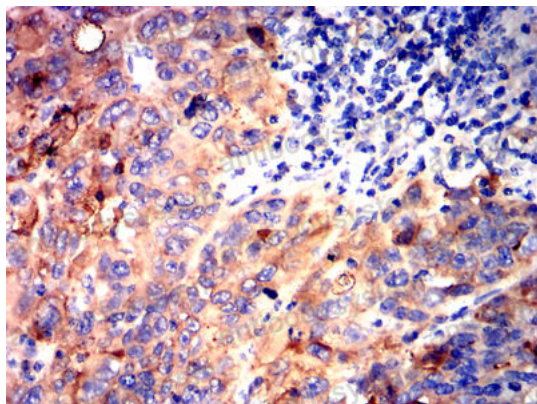
For research use only.

Data Image



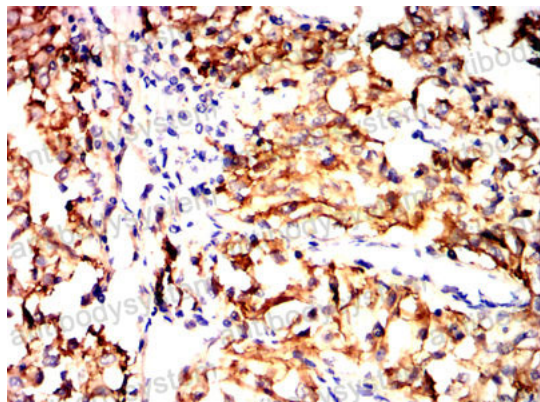
Flow Cytometry

Flow cytometric analysis of U937 cells using SCARB1 mouse mAb (green) and negative control (red).



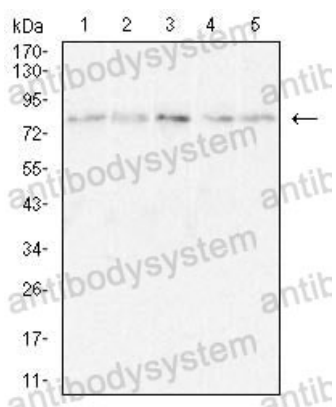
Immunohistochemical

Immunohistochemical analysis of paraffin-embedded human endometrial cancer tissues using SCARB1 mouse mAb with DAB staining.



Immunohistochemical

Immunohistochemical analysis of paraffin-embedded human kidney cancer tissues using SCARB1 mouse mAb with DAB staining.



Western blot

Western blot analysis using SCARB1 mouse mAb against Hela (1), U937 (2), HePG2 (3), NIH/3T3 (4), and mouse Liver (5) cell lysate.