

# Anti-SCARB1/SR-BI/CLA-1/SRB1 Antibody (R3Y42)

## Summary

---

<b>Catalog No.</b>	RHK08804
<b>Clone ID</b>	R3Y42
<b>Host species</b>	Mouse
<b>Tested applications</b>	ELISA: 1:10000, FCM: 1:200-1:400, IHC: 1:200-1:1000, WB: 1:500-1:2000
<b>Species reactivity</b>	Human
<b>Form</b>	Liquid
<b>Storage buffer</b>	0.01M PBS, pH 7.4, 0.05% Sodium Azide.
<b>Concentration</b>	1 mg/ml
<b>Purity</b>	>95% as determined by SDS-PAGE.
<b>Clonality</b>	Monoclonal
<b>Isotype</b>	IgG2a
<b>Applications</b>	ELISA, FCM, IHC, WB
<b>Target</b>	CD36, CLA1, CD36 antigen-like 1, CD36L1, SRB1, Collagen type I receptor, thrombospondin receptor-like 1, SCARB1, Scavenger receptor class B member 1, CLA-1, SR-BI, CD36 and LIMPII analogous 1
<b>Purification</b>	Protein A/G purified from cell culture supernatant.
<b>Endotoxin level</b>	Please contact with the lab for this information.
<b>Accession</b>	Q8WTV0

**Stability and Storage**

Use a manual defrost freezer and avoid repeated freeze-thaw cycles.

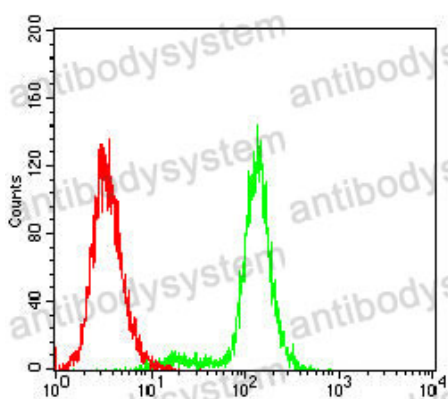
Store at 4°C short term (1-2 weeks). Store at -20°C 12 months. Store at -80°C long term.

**Note**

For research use only.

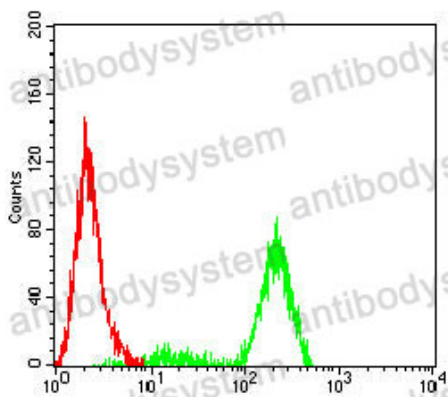
## Data Image

---



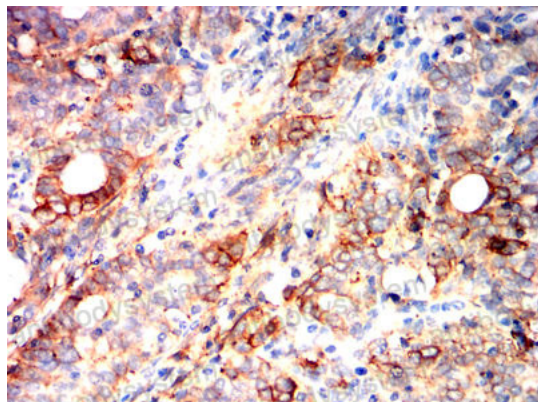
Flow Cytometry

Flow cytometric analysis of BEL-7402 cells using SCARB1 mouse mAb (green) and negative control (red).



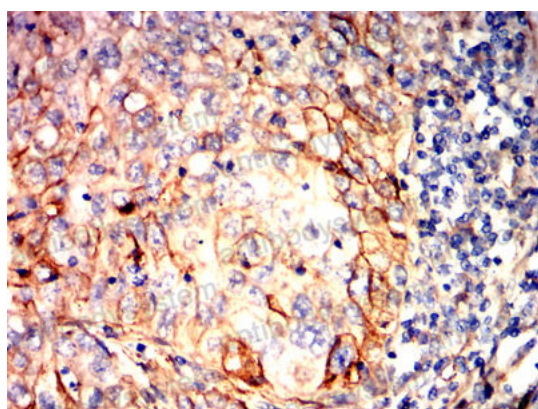
Flow Cytometry

Flow cytometric analysis of Hela cells using SCARB1 mouse mAb (green) and negative control (red).



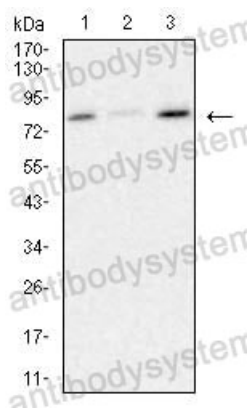
Immunohistochemical

Immunohistochemical analysis of paraffin-embedded human cervical cancer tissues using SCARB1 mouse mAb with DAB staining.



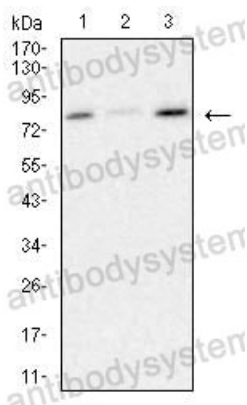
Immunohistochemical

Immunohistochemical analysis of paraffin-embedded human lung cancer tissues using SCARB1 mouse mAb with DAB staining.



Western blot

Western blot analysis using SCARB1 mouse mAb against Hela (1), U937 (2), and HePG2 (3) cell lysate.



Western blot

Western blot analysis using SCARB1 mouse mAb against HeLa (1), U937 (2), and HePG2 (3) cell lysate.