

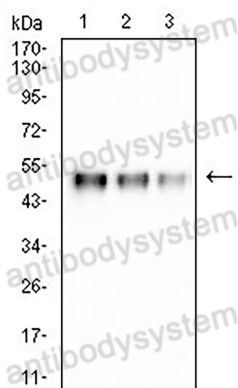
# Anti-His Tag Antibody (R3Y39)

## Summary

---

<b>Catalog No.</b>	RGK07905
<b>Clone ID</b>	R3Y39
<b>Host species</b>	Mouse
<b>Tested applications</b>	ELISA: 1:10000, FCM: 1:200-1:400, IF: 1:100-1:1000, IHC: 1:100-1:1000, IP: 1:20, WB: 1:500-1:1000
<b>Species reactivity</b>	General
<b>Form</b>	Liquid
<b>Storage buffer</b>	0.01M PBS, pH 7.4, 0.05% Sodium Azide.
<b>Concentration</b>	1 mg/ml
<b>Purity</b>	>95% as determined by SDS-PAGE.
<b>Clonality</b>	Monoclonal
<b>Isotype</b>	IgG1
<b>Applications</b>	ELISA, FCM, IF, IHC, IP, WB
<b>Target</b>	6 × His Tag (HHHHHH), 6HIS, 6*HIS
<b>Purification</b>	Protein A/G purified from cell culture supernatant.
<b>Endotoxin level</b>	Please contact with the lab for this information.
<b>Stability and Storage</b>	Use a manual defrost freezer and avoid repeated freeze-thaw cycles. Store at 4°C short term (1-2 weeks). Store at -20°C 12 months. Store at -80°C long term.
<b>Note</b>	For research use only.

## Data Image



Western blot

Various lysates were subjected to SDS PAGE followed by western blot with His Tag antibody (RGK07905) at 1:1000.

Lane 1: Recombinant protein ( 25 ng )

Lane 2: Recombinant protein ( 10 ng )

Lane 3: Recombinant protein ( 2.5 ng )

Second Ab: Goat Anti-Mouse IgG H&L Polyclonal antibody, HRP (PMB96431) at 0.1  $\mu\text{g/mL}$ .

Predict MW: 50 kDa

Observed MW: 50 kDa