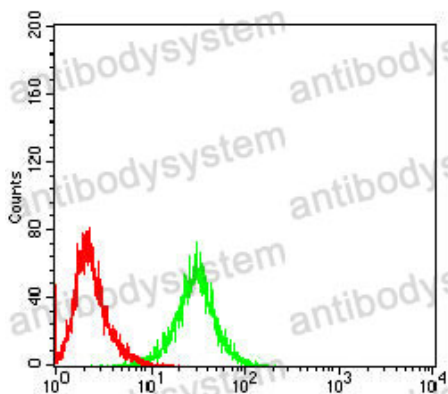


Anti-DLL3 Antibody (R3Y36)

Summary

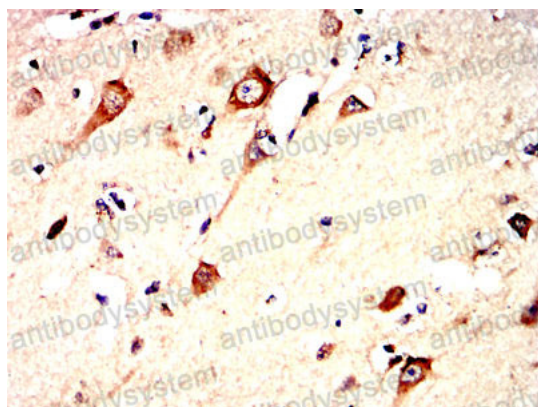
| | |
|------------------------------|---|
| Catalog No. | RHK06402 |
| Clone ID | R3Y36 |
| Host species | Mouse |
| Tested applications | ELISA: 1:10000, FCM: 1:200-1:400, IHC: 1:200-1:1000 |
| Species reactivity | Human |
| Form | Liquid |
| Storage buffer | 0.01M PBS, pH 7.4, 0.05% Sodium Azide. |
| Concentration | 1 mg/ml |
| Purity | >95% as determined by SDS-PAGE. |
| Clonality | Monoclonal |
| Isotype | IgG1 |
| Applications | ELISA, FCM, IHC |
| Target | Drosophila Delta homolog 3, Delta3, Delta-like protein 3, DLL3 |
| Purification | Protein A/G purified from cell culture supernatant. |
| Endotoxin level | Please contact with the lab for this information. |
| Accession | Q9NYJ7 |
| Stability and Storage | Use a manual defrost freezer and avoid repeated freeze-thaw cycles. Store at 4°C short term (1-2 weeks). Store at -20°C 12 months. Store at -80°C long term. |
| Note | For research use only. |

Data Image



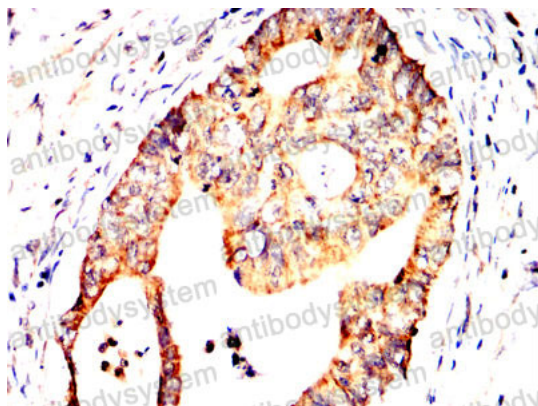
Flow Cytometry

Flow cytometric analysis of HEK293 cells using DLL3 mouse mAb (green) and negative control (red).



Immunohistochemical

Immunohistochemical analysis of paraffin-embedded human brain tissues using DLL3 mouse mAb with DAB staining.



Immunohistochemical

Immunohistochemical analysis of paraffin-embedded human rectum cancer tissues using DLL3 mouse mAb with DAB staining.