

Anti-SLC22A12 Antibody (R3Y33)

Summary

Catalog No.	RHK05801
Clone ID	R3Y33
Host species	Mouse
Tested applications	ELISA: 1:10000, FCM: 1:200-1:400, IHC: 1:200-1:1000, WB: 1:500-1:2000
Species reactivity	Human, Mouse
Form	Liquid
Storage buffer	0.01M PBS, pH 7.4, 0.05% Sodium Azide.
Concentration	1 mg/ml
Purity	>95% as determined by SDS-PAGE.
Clonality	Monoclonal
Isotype	IgG1
Applications	ELISA, FCM, IHC, WB
Target	Urate anion exchanger 1, Organic anion transporter 4-like protein, OATL4, Solute carrier family 22 member 12, RST, URAT1, SLC22A12, Renal-specific transporter
Purification	Protein A/G purified from cell culture supernatant.
Endotoxin level	Please contact with the lab for this information.
Accession	Q96S37

Stability and Storage

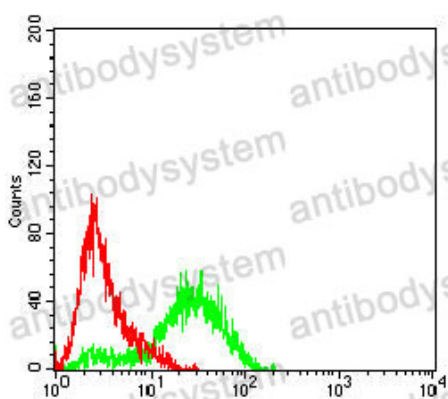
Use a manual defrost freezer and avoid repeated freeze-thaw cycles.

Store at 4°C short term (1-2 weeks). Store at -20°C 12 months. Store at -80°C long term.

Note

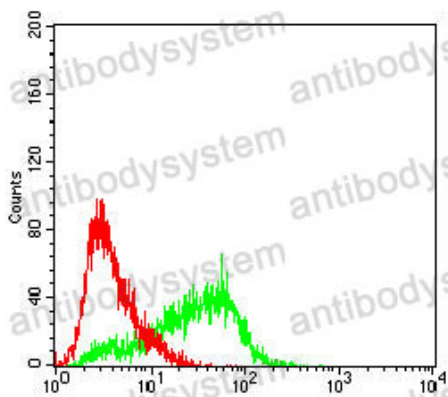
For research use only.

Data Image



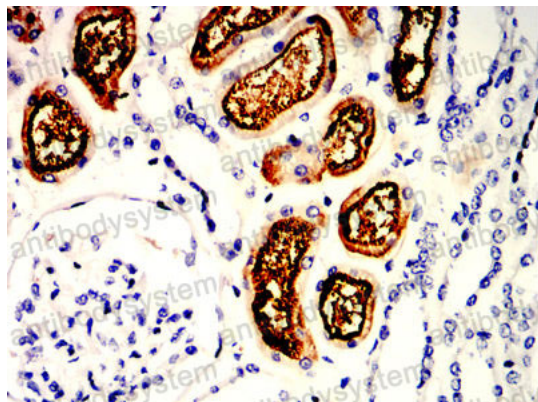
Flow Cytometry

Flow cytometric analysis of Hela cells using SLC22A12 mouse mAb (green) and negative control (red).



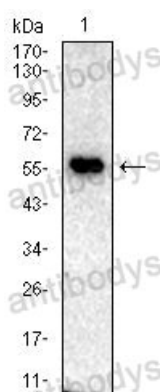
Flow Cytometry

Flow cytometric analysis of HepG2 cells using SLC22A12 mouse mAb (green) and negative control (red).



Immunohistochemical

Immunohistochemical analysis of paraffin-embedded human kidney tissues using SLC22A12 mouse mAb with DAB staining.



Western blot

Western blot analysis using SLC22A12 mouse mAb against mouse kidney(1) tissue lysate.