

Anti-BCL2L2 Antibody (R3Y31)

Summary

Catalog No.	RHK05402
Clone ID	R3Y31
Host species	Mouse
Tested applications	ELISA: 1:10000, FCM: 1:200-1:400, IF: 1:200-1:1000, IHC: 1:200-1:1000, WB: 1:500-1:2000
Species reactivity	Human
Form	Liquid
Storage buffer	0.01M PBS, pH 7.4, 0.05% Sodium Azide.
Concentration	1 mg/ml
Purity	>95% as determined by SDS-PAGE.
Clonality	Monoclonal
Isotype	IgG2a
Applications	ELISA, FCM, IF, IHC, WB
Target	Bcl-2-like protein 2, BCL2L2, Bcl2-L-2, KIAA0271, Apoptosis regulator Bcl-W, BCLW
Purification	Protein A/G purified from cell culture supernatant.
Endotoxin level	Please contact with the lab for this information.
Accession	Q92843

Stability and Storage

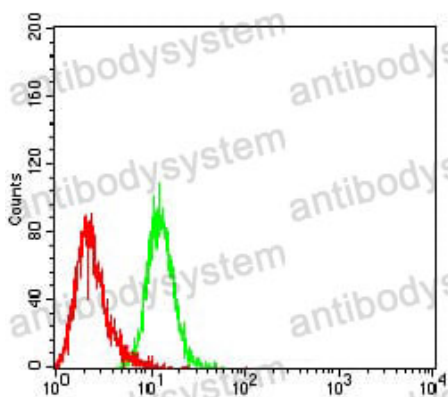
Use a manual defrost freezer and avoid repeated freeze-thaw cycles.

Store at 4°C short term (1-2 weeks). Store at -20°C 12 months. Store at -80°C long term.

Note

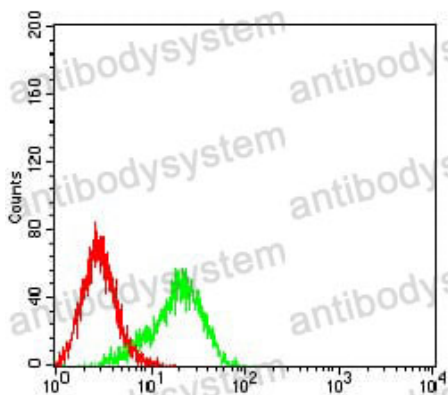
For research use only.

Data Image



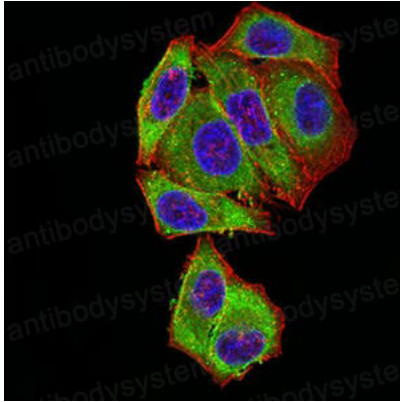
Flow Cytometry

Flow cytometric analysis of HeLa cells using BCL2L2 mouse mAb (green) and negative control (red).



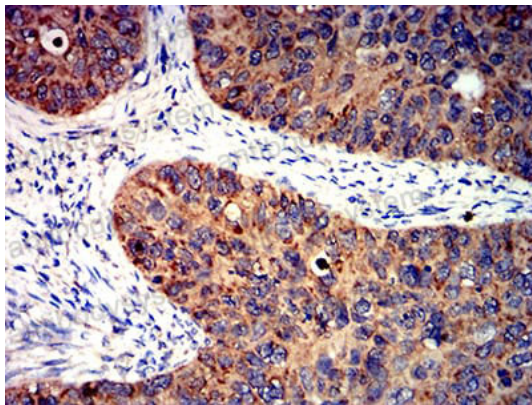
Flow Cytometry

Flow cytometric analysis of K562 cells using BCL2L2 mouse mAb (green) and negative control (red).



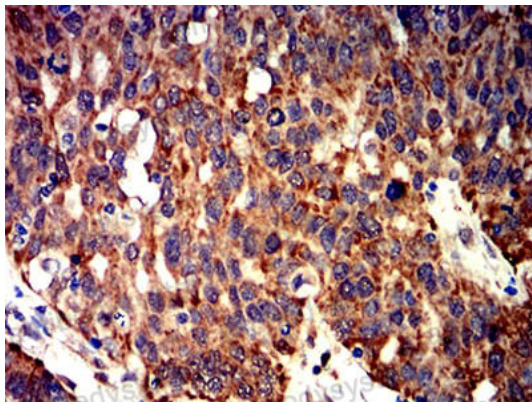
Immunofluorescence

Immunofluorescence analysis of HeLa cells using BCL2L2 mouse mAb (green). Blue: DRAQ5 fluorescent DNA dye. Red: Actin filaments have been labeled with Alexa Fluor- 555 phalloidin.



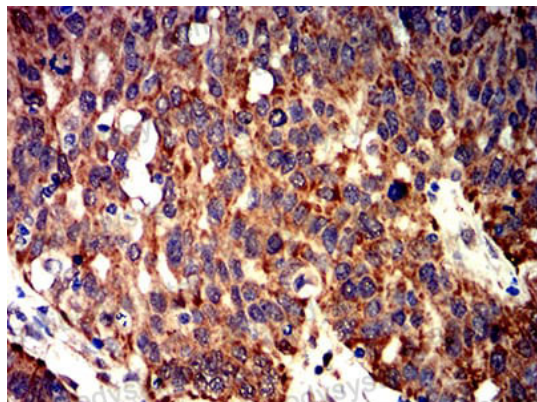
Immunohistochemical

Immunohistochemical analysis of paraffin-embedded human cervical cancer tissues using BCL2L2 mouse mAb with DAB staining.



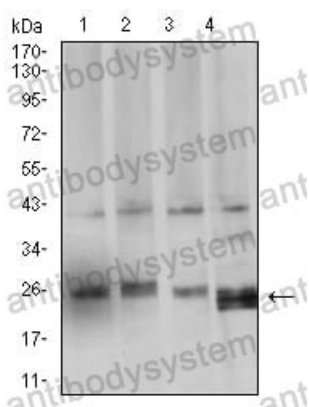
Immunohistochemical

Immunohistochemical analysis of paraffin-embedded human ovarian cancer tissues using BCL2L2 mouse mAb with DAB staining.



Immunohistochemical analysis of paraffin-embedded human ovarian cancer tissues using BCL2L2 mouse mAb with DAB staining.

Immunohistochemical



Western blot analysis using BCL2L2 mouse mAb against HCT116 (1), LOVO (2), SW480 (3), and HL-60 (4) cell lysate.

Western blot