

Anti-AP2M1 Antibody (R3Y20)

Summary

Catalog No.	RHJ96502
Clone ID	R3Y20
Host species	Mouse
Tested applications	ELISA: 1:10000, WB: 1:300-1:800
Species reactivity	Human, Monkey
Form	Liquid
Storage buffer	0.01M PBS, pH 7.4, 0.05% Sodium Azide.
Concentration	1 mg/ml
Purity	>95% as determined by SDS-PAGE.
Clonality	Monoclonal
Isotype	IgG1
Applications	ELISA, WB
Target	Adaptor-related protein complex 2 subunit mu, AP-2 mu chain, CLAPM1, HA2 50 kDa subunit, Plasma membrane adaptor AP-2 50 kDa protein, Adaptin-mu2, AP2M1, KIAA0109, Clathrin coat assembly protein AP50, Adaptor protein complex AP-2 subunit mu, Clathrin assembly protein complex 2 mu medium chain, AP-2 complex subunit mu, Clathrin coat-associated protein AP50
Purification	Protein A/G purified from cell culture supernatant.
Endotoxin level	Please contact with the lab for this information.
Accession	Q96CW1

Stability and Storage

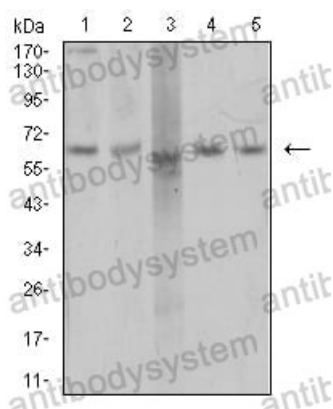
Use a manual defrost freezer and avoid repeated freeze-thaw cycles.

Store at 4°C short term (1-2 weeks). Store at -20°C 12 months. Store at -80°C long term.

Note

For research use only.

Data Image



Western blot

Western blot analysis using AP2M1 mouse mAb against COS7 (1), SK-Br-3 (2), MCF-7 (3), T47D (4), and HEK293 (5) cell lysate.