

# Anti-PLA2G12A Antibody (R3Y19)

## Summary

---

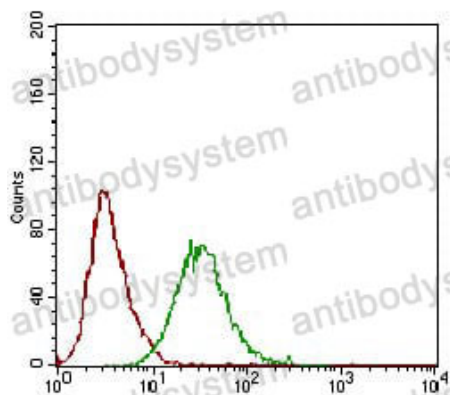
|                              |   |
|------------------------------|---|
| <b>Catalog No.</b>           | RHJ96002  |
| <b>Clone ID</b>              | R3Y19   |
| <b>Host species</b>          | Mouse   |
| <b>Tested applications</b>   | ELISA: 1:10000, FCM: 1:200-1:400, IHC: 1:200-1:1000   |
| <b>Species reactivity</b>    | Human   |
| <b>Form</b>                  | Liquid  |
| <b>Storage buffer</b>        | 0.01M PBS, pH 7.4, 0.05% Sodium Azide.  |
| <b>Concentration</b>         | 1 mg/ml   |
| <b>Purity</b>                | >95% as determined by SDS-PAGE.   |
| <b>Clonality</b>             | Monoclonal  |
| <b>Isotype</b>               | IgG1  |
| <b>Applications</b>          | ELISA, FCM, IHC   |
| <b>Target</b>                | GXII sPLA2, sPLA2-XII, PLA2G12A, Phosphatidylcholine 2-acylhydrolase 12A, Group XIIA secretory phospholipase A2, PLA2G12  |
| <b>Purification</b>          | Protein A/G purified from cell culture supernatant.   |
| <b>Endotoxin level</b>       | Please contact with the lab for this information.   |
| <b>Accession</b>             | Q9BZM1  |
| <b>Stability and Storage</b> | Use a manual defrost freezer and avoid repeated freeze-thaw cycles.<br>Store at 4°C short term (1-2 weeks). Store at -20°C 12 months. Store at -80°C long term. |

**Note**

For research use only.

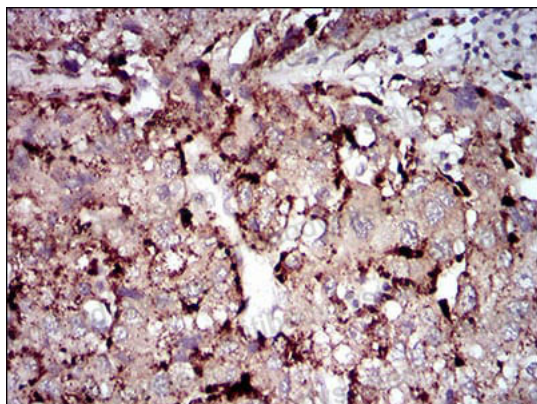
## Data Image

---



Flow Cytometry

Flow cytometric analysis of Hela cells using PLA2G12A mouse mAb (green) and negative control (red).



Immunohistochemical

Immunohistochemical analysis of paraffin-embedded human liver cancer tissues using PLA2G12A mouse mAb with DAB staining.