

Anti-PLA2G12A Antibody (R3Y18)

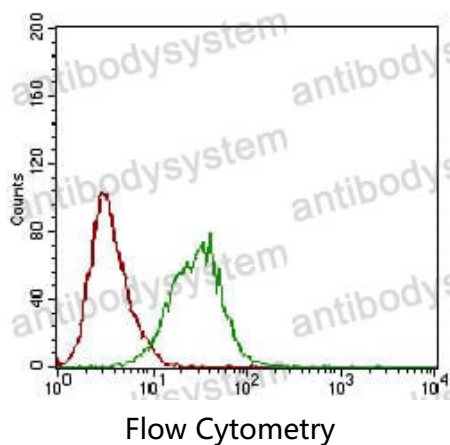
Summary

Catalog No.	RHJ96001
Clone ID	R3Y18
Host species	Mouse
Tested applications	ELISA: 1:10000, FCM: 1:200-1:400
Species reactivity	Human
Form	Liquid
Storage buffer	0.01M PBS, pH 7.4, 0.05% Sodium Azide.
Concentration	1 mg/ml
Purity	>95% as determined by SDS-PAGE.
Clonality	Monoclonal
Isotype	IgG1
Applications	ELISA, FCM
Target	GXII sPLA2, sPLA2-XII, PLA2G12A, Phosphatidylcholine 2-acylhydrolase 12A, Group XIIA secretory phospholipase A2, PLA2G12
Purification	Protein A/G purified from cell culture supernatant.
Endotoxin level	Please contact with the lab for this information.
Accession	Q9BZM1
Stability and Storage	Use a manual defrost freezer and avoid repeated freeze-thaw cycles. Store at 4°C short term (1-2 weeks). Store at -20°C 12 months. Store at -80°C long term.

Note

For research use only.

Data Image



Flow cytometric analysis of Hela cells using PLA2G12A mouse mAb (green) and negative control (red).