

Anti-CD368/CLEC4D Antibody (R3Y09)

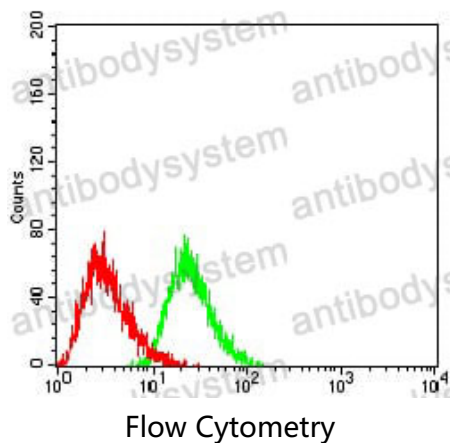
Summary

Catalog No.	RHJ95002
Clone ID	R3Y09
Host species	Mouse
Tested applications	ELISA: 1:10000, FCM: 1:200-1:400
Species reactivity	Human
Form	Liquid
Storage buffer	0.01M PBS, pH 7.4, 0.05% Sodium Azide.
Concentration	1 mg/ml
Purity	>95% as determined by SDS-PAGE.
Clonality	Monoclonal
Isotype	IgG1
Applications	ELISA, FCM
Target	CD368, CLECSF8, C-type lectin domain family 4 member D, C-type lectin superfamily member 8, MCL, C-type lectin-like receptor 6, CLEC4D, CLEC-6
Purification	Protein A/G purified from cell culture supernatant.
Endotoxin level	Please contact with the lab for this information.
Accession	Q8WXI8
Stability and Storage	Use a manual defrost freezer and avoid repeated freeze-thaw cycles. Store at 4°C short term (1-2 weeks). Store at -20°C 12 months. Store at -80°C long term.

Note

For research use only.

Data Image



Flow cytometric analysis of HL-60 cells using CD368 mouse mAb (green) and negative control (red).