

# Anti-CD367/CLEC4A Antibody (R3Y07)

## Summary

---

<b>Catalog No.</b>	RHJ94901
<b>Clone ID</b>	R3Y07
<b>Host species</b>	Mouse
<b>Tested applications</b>	ELISA: 1:10000, FCM: 1:200-1:400
<b>Species reactivity</b>	Human
<b>Form</b>	Liquid
<b>Storage buffer</b>	0.01M PBS, pH 7.4, 0.05% Sodium Azide.
<b>Concentration</b>	1 mg/ml
<b>Purity</b>	>95% as determined by SDS-PAGE.
<b>Clonality</b>	Monoclonal
<b>Isotype</b>	IgG2a
<b>Applications</b>	ELISA, FCM
<b>Target</b>	C-type lectin DDB27, CLECSF6, CLEC4A, LLIR, CD367, Lectin-like immunoreceptor, DCIR, C-type lectin domain family 4 member A, Dendritic cell immunoreceptor, C-type lectin superfamily member 6
<b>Purification</b>	Protein A/G purified from cell culture supernatant.
<b>Endotoxin level</b>	Please contact with the lab for this information.
<b>Accession</b>	Q9UMR7

**Stability and Storage**

Use a manual defrost freezer and avoid repeated freeze-thaw cycles.

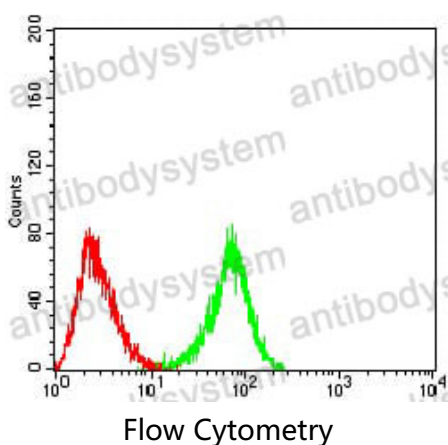
Store at 4°C short term (1-2 weeks). Store at -20°C 12 months. Store at -80°C long term.

**Note**

For research use only.

**Data Image**

---



Flow cytometric analysis of HL-60 cells using CD367 mouse mAb (green) and negative control (red).