

Anti-Human IgM Antibody (R3Y01)

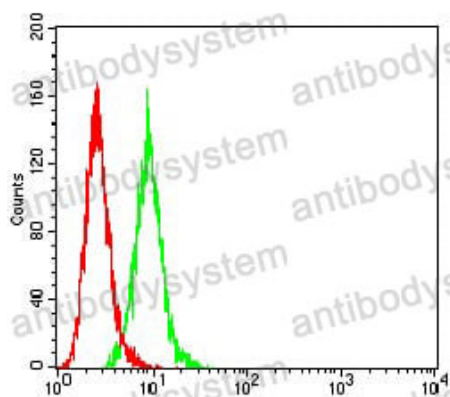
Summary

Catalog No.	RHJ93202
Clone ID	R3Y01
Host species	Mouse
Tested applications	ELISA: 1:10000, FCM: 1:200-1:400, IHC: 1:200-1:1000, WB: 1:500-1:2000
Species reactivity	Human
Form	Liquid
Storage buffer	0.01M PBS, pH 7.4, 0.05% Sodium Azide.
Concentration	1 mg/ml
Purity	>95% as determined by SDS-PAGE.
Clonality	Monoclonal
Isotype	IgG1
Applications	ELISA, FCM, IHC, WB
Target	Ig mu chain C region, Ig mu chain C region BOT, IGHM, Immunoglobulin heavy constant mu, Ig mu chain C region GAL, Ig mu chain C region OU
Purification	Protein A/G purified from cell culture supernatant.
Endotoxin level	Please contact with the lab for this information.
Accession	P01871
Stability and Storage	Use a manual defrost freezer and avoid repeated freeze-thaw cycles. Store at 4°C short term (1-2 weeks). Store at -20°C 12 months. Store at -80°C long term.

Note

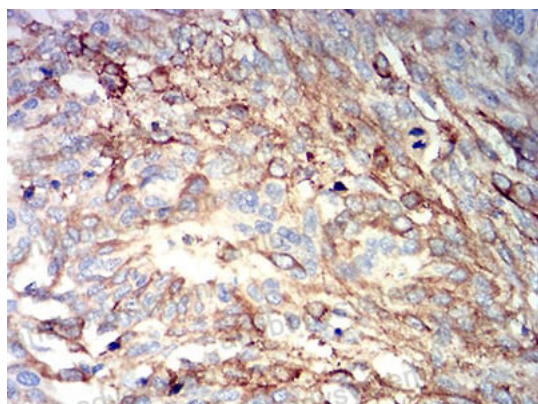
For research use only.

Data Image



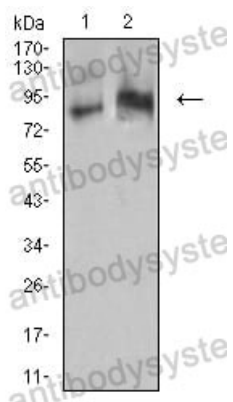
Flow Cytometry

Flow cytometric analysis of HeLa cells using IGHM mouse mAb (green) and negative control (red).



Immunohistochemical

Immunohistochemical analysis of paraffin-embedded human esophageal cancer tissues using IGHM mouse mAb with DAB staining.



Western blot

Western blot analysis using IGHM mouse mAb against Raji (1) and Ramos (2) cell lysate.