

# Anti-Human IgG4 Antibody (R3X98)

## Summary

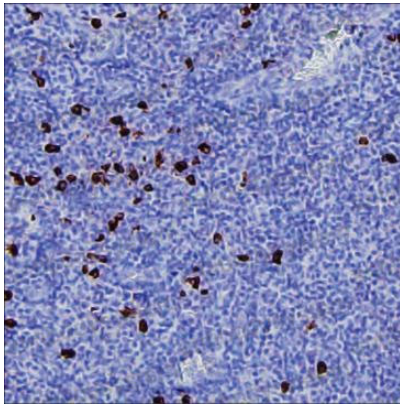
---

<b>Catalog No.</b>	RHJ93114
<b>Clone ID</b>	R3X98
<b>Host species</b>	Mouse
<b>Tested applications</b>	IHC: 1:500-1:1000, WB: 1:500-1:1000
<b>Species reactivity</b>	Human
<b>Form</b>	Liquid
<b>Storage buffer</b>	0.01M PBS, pH 7.4, 0.05% Sodium Azide.
<b>Concentration</b>	1 mg/ml
<b>Purity</b>	>95% as determined by SDS-PAGE.
<b>Clonality</b>	Monoclonal
<b>Isotype</b>	IgG1
<b>Applications</b>	IHC, WB
<b>Target</b>	Ig gamma-4 chain C region, IGHG4, Immunoglobulin heavy constant gamma 4
<b>Purification</b>	Protein A/G purified from cell culture supernatant.
<b>Endotoxin level</b>	Please contact with the lab for this information.
<b>Accession</b>	P01861
<b>Stability and Storage</b>	Use a manual defrost freezer and avoid repeated freeze-thaw cycles. Store at 4°C short term (1-2 weeks). Store at -20°C 12 months. Store at -80°C long term.

## Note

For research use only.

## Data Image



Immunohistochemical

IHC-P analysis of human tonsil tissue by anti-human IgG4 antibody (RHJ93114). IHC-P was performed using sections of the formalin-fixed paraffin-embedded human tonsil tissue; Result: Squamous epithelial cells and non-germinal center cells are positively stained at cytoplasm.



Western blot

Lane 1: 100 ng of human IgG1 ; Lane 2: 100 ng of human IgG2; Lane 3: 100 ng of human IgG3; Lane 4: 100 ng of human IgG4; Lane 5: 100 ng of human IgA ; Lane 6: 100 ng of human IgM ; Lane 7: 100 ng of human IgE ; Result: RHJ93114 can specifically detect human IgG4 by Western blotting;