

Anti-Human IgG2 Antibody (R3X96)

Summary

Catalog No.	RHJ92904
Clone ID	R3X96
Host species	Mouse
Tested applications	ELISA: 1:10000, IHC: 1:500-1:1000
Species reactivity	Human
Form	Liquid
Storage buffer	0.01M PBS, pH 7.4, 0.05% Sodium Azide.
Concentration	1 mg/ml
Purity	>95% as determined by SDS-PAGE.
Clonality	Monoclonal
Isotype	IgG1
Applications	ELISA, IHC
Target	Ig gamma-2 chain C region DOT, Immunoglobulin heavy constant gamma 2, IGHG2, Ig gamma-2 chain C region TIL, Ig gamma-2 chain C region ZIE, Ig gamma-2 chain C region
Purification	Protein A/G purified from cell culture supernatant.
Endotoxin level	Please contact with the lab for this information.
Accession	P01859

Stability and Storage

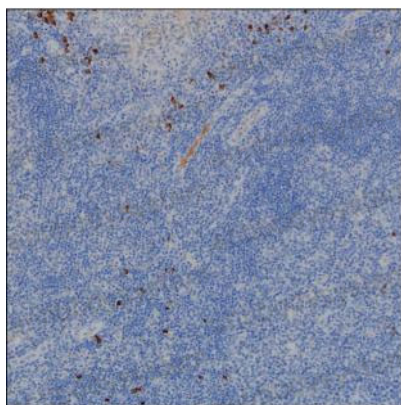
Use a manual defrost freezer and avoid repeated freeze-thaw cycles.

Store at 4°C short term (1-2 weeks). Store at -20°C 12 months. Store at -80°C long term.

Note

For research use only.

Data Image



Immunohistochemical

IHC-P analysis in tonsil by anti-human IgG2 Antibody ;Immunohistochemistry was performed using sections of formalin-fixed paraffin-embedded tonsil;Results: Germinal center cells and squamous epithelial cells are positively stained at cytoplasm.