

Anti-Human IgG2 Antibody (R3X95)

Summary

Catalog No.	RHJ92905
Clone ID	R3X95
Host species	Mouse
Tested applications	ELISA: 1:10000, WB: 1:500-1:1000
Species reactivity	Human
Form	Liquid
Storage buffer	0.01M PBS, pH 7.4, 0.05% Sodium Azide.
Concentration	1 mg/ml
Purity	>95% as determined by SDS-PAGE.
Clonality	Monoclonal
Isotype	IgG1
Applications	ELISA, WB
Target	Ig gamma-2 chain C region DOT, Immunoglobulin heavy constant gamma 2, IGHG2, Ig gamma-2 chain C region TIL, Ig gamma-2 chain C region ZIE, Ig gamma-2 chain C region
Purification	Protein A/G purified from cell culture supernatant.
Endotoxin level	Please contact with the lab for this information.
Accession	P01859

Recombinant Proteins & Antibodies

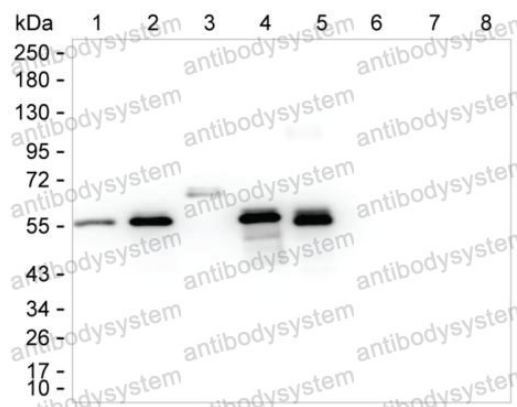
Stability and Storage

Use a manual defrost freezer and avoid repeated freeze-thaw cycles.

Store at 4°C short term (1-2 weeks). Store at -20°C 12 months. Store at -80°C long term.

Note

For research use only.

Data Image

Western blot

Lane 1: 500 ng of human IgG1; Lane 2: 500 ng of human IgG2; Lane 3: 500 ng of human IgG3; Lane 4: 500 ng of human IgG4; Lane 5: 500 ng of human IgG; Lane 6: 500 ng of human IgA; Lane 7: 500 ng of human IgM; Lane 8: 500 ng of human IgE; Result: RHJ92905 can detect human IgG by Western blotting;