

# Anti-Rat IgG1 Antibody (R3X94)

## Summary

---

<b>Catalog No.</b>	RRJ92802
<b>Clone ID</b>	R3X94
<b>Host species</b>	Mouse
<b>Tested applications</b>	WB: 1:500-1:1000
<b>Species reactivity</b>	Rat
<b>Form</b>	Liquid
<b>Storage buffer</b>	0.01M PBS, pH 7.4, 0.01% Thimerosal.
<b>Concentration</b>	1 mg/ml
<b>Purity</b>	>95% as determined by SDS-PAGE.
<b>Clonality</b>	Monoclonal
<b>Isotype</b>	IgG1
<b>Applications</b>	WB
<b>Target</b>	Ig gamma-1 chain C region EU, Immunoglobulin heavy constant gamma 1, IGHG1, Ig gamma-1 chain C region NIE, Ig gamma-1 chain C region, Ig gamma-1 chain C region KOL
<b>Purification</b>	Protein A/G purified from cell culture supernatant.
<b>Endotoxin level</b>	Please contact with the lab for this information.
<b>Accession</b>	P20759

## Recombinant Proteins & Antibodies

### Stability and Storage

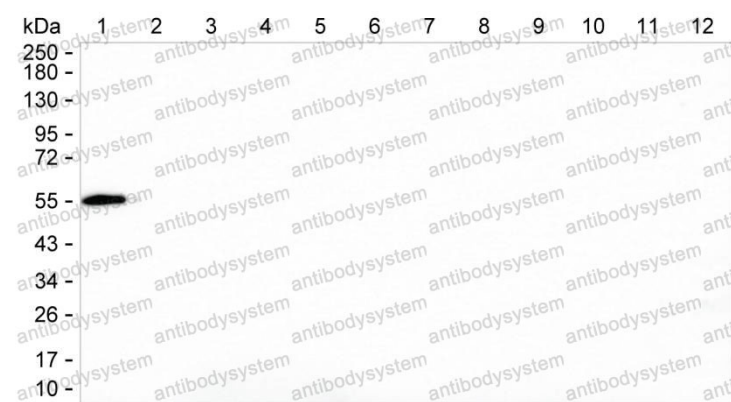
Use a manual defrost freezer and avoid repeated freeze-thaw cycles.

Store at 4°C short term (1-2 weeks). Store at -20°C 12 months. Store at -80°C long term.

### Note

For research use only.

## Data Image



Western blot

Lane 1: 300 ng of rat IgG1 ; Lane 2: 300 ng of rat IgG2a ; Lane 3: 300 ng of rat IgG2b ; Lane 4: 300 ng of rat IgG2c ; Lane 5: 300 ng of rat IgA ; Lane 6: 300 ng of rat IgM ; Lane 7: 300 ng of mouse IgG2a ; Lane 8: 300 ng of mouse IgG2b ; Lane 9: 300 ng of mouse IgA ; Lane 10: 300 ng of mouse IgGM ; Lane 11: 300 ng of mouse IgG1 ; Lane 12: 300 ng of mouse IgG3 ; Result: RRJ92802 can detect Rat IgG1 by Western blotting.