

# Anti-Human IgG1 Antibody (R3X93)

## Summary

---

<b>Catalog No.</b>	RHJ92833
<b>Clone ID</b>	R3X93
<b>Host species</b>	Mouse
<b>Tested applications</b>	WB: 1:500-1:1000
<b>Species reactivity</b>	Human
<b>Form</b>	Liquid
<b>Storage buffer</b>	0.01M PBS, pH 7.4, 0.05% Sodium Azide.
<b>Concentration</b>	1 mg/ml
<b>Purity</b>	>95% as determined by SDS-PAGE.
<b>Clonality</b>	Monoclonal
<b>Isotype</b>	IgG1
<b>Applications</b>	WB
<b>Target</b>	Ig gamma-1 chain C region EU, Immunoglobulin heavy constant gamma 1, IGHG1, Ig gamma-1 chain C region NIE, Ig gamma-1 chain C region, Ig gamma-1 chain C region KOL
<b>Purification</b>	Protein A/G purified from cell culture supernatant.
<b>Endotoxin level</b>	Please contact with the lab for this information.
<b>Accession</b>	P01857

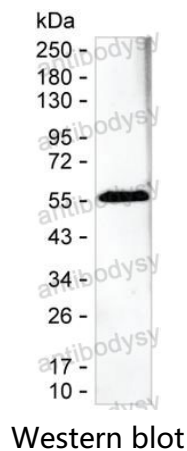
**Stability and Storage**

Use a manual defrost freezer and avoid repeated freeze-thaw cycles.

Store at 4°C short term (1-2 weeks). Store at -20°C 12 months. Store at -80°C long term.

**Note**

For research use only.

**Data Image**

100 ng of reduced human IgG1 antibody was run on 6-18% SDS-PAGE under reducing conditions and blotted onto nitrocellulose membrane. RHJ92833 at 1 µg/mL was used as the primary antibody and peroxidase conjugated goat anti-mouse IgG was used as the secondary antibody. IGHG1 band was visualized using ECL Western Blotting Substrate. Result: RHJ92833 can detect human IGHG1 by Western blotting.