

Anti-Human IgE Antibody (R3X91)

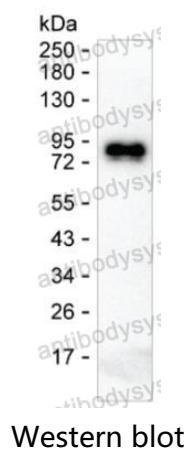
Summary

Catalog No.	RHJ92705
Clone ID	R3X91
Host species	Mouse
Tested applications	WB: 1:500-1:1000
Species reactivity	Human
Form	Liquid
Storage buffer	0.01M PBS, pH 7.4, 0.05% Sodium Azide.
Concentration	1 mg/ml
Purity	>95% as determined by SDS-PAGE.
Clonality	Monoclonal
Isotype	IgG2a
Applications	WB
Target	Ig epsilon chain C region, IGHE, Ig epsilon chain C region ND, Immunoglobulin heavy constant epsilon
Purification	Protein A/G purified from cell culture supernatant.
Endotoxin level	Please contact with the lab for this information.
Accession	P01854
Stability and Storage	Use a manual defrost freezer and avoid repeated freeze-thaw cycles. Store at 4°C short term (1-2 weeks). Store at -20°C 12 months. Store at -80°C long term.

Note

For research use only.

Data Image



100 ng of human IgE was run on 6-18% SDS-PAGE under reducing conditions and blotted onto nitrocellulose membrane. RHJ92705 at 1 μ g/mL was used as the primary antibody and peroxidase conjugated goat anti-mouse IgG was used as the secondary antibody. Human IgE band was visualized using ECL Substrate. Result: RHJ92705 can detect human IgE by Western blotting.