

Anti-Human IgA2 Antibody (R3X90)

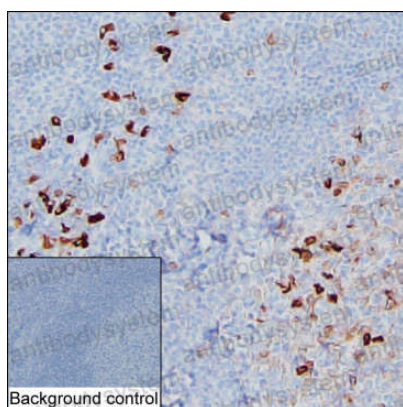
Summary

Catalog No.	RHJ92501
Clone ID	R3X90
Host species	Mouse
Tested applications	IHC: 1:500-1:1000, WB: 1:500-1:1000
Species reactivity	Human
Form	Liquid
Storage buffer	0.01M PBS, pH 7.4, 0.05% Sodium Azide.
Concentration	1 mg/ml
Purity	>95% as determined by SDS-PAGE.
Clonality	Monoclonal
Isotype	IgG1
Applications	IHC, WB
Target	Ig alpha-2 chain C region LAN, Immunoglobulin heavy constant alpha 2, Ig alpha-2 chain C region BUT, Ig alpha-2 chain C region, IGHA2
Purification	Protein A/G purified from cell culture supernatant.
Endotoxin level	Please contact with the lab for this information.
Accession	P01877
Stability and Storage	Use a manual defrost freezer and avoid repeated freeze-thaw cycles. Store at 4°C short term (1-2 weeks). Store at -20°C 12 months. Store at - 80°C long term.

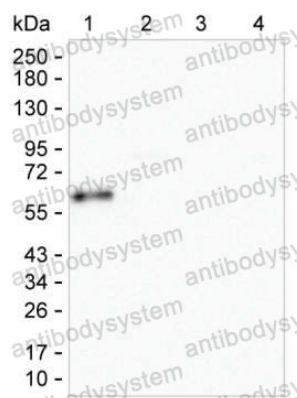
Note

For research use only.

Data Image



Immunohistochemical



Western blot

IHC-P analysis of tonsil tissue by IgA antibody (RHJ92501). IHC-P was performed using sections of the formalin-fixed paraffin-embedded tonsil tissue; Result: Germinal center cells and squamous epithelial cells are positively stained at the cytoplasm.

Lane 1: 100 ng of human IgA; Lane 2: 100 ng of human IgM; Lane 3: 100 ng of human IgG; Lane 4: 100 ng of human IgE; Result: RHJ92501 can specifically detect human IgA by Western blotting.