

Anti-Human IgA1 Antibody (R3X89)

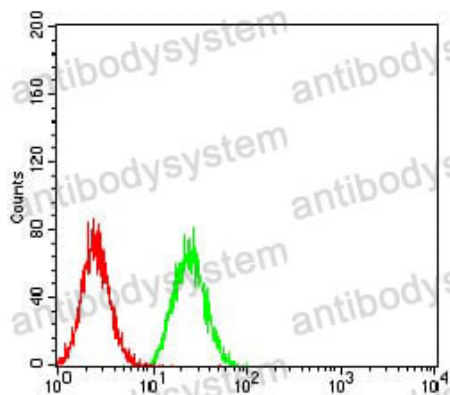
Summary

Catalog No.	RHJ92402
Clone ID	R3X89
Host species	Mouse
Tested applications	ELISA: 1:10000, FCM: 1:200-1:400, IHC: 1:200-1:1000, WB: 1:500-1:2000
Species reactivity	Human, Mouse, Monkey
Form	Liquid
Storage buffer	0.01M PBS, pH 7.4, 0.05% Sodium Azide.
Concentration	1 mg/ml
Purity	>95% as determined by SDS-PAGE.
Clonality	Monoclonal
Isotype	IgG1
Applications	ELISA, FCM, IHC, WB
Target	Immunoglobulin heavy constant alpha 1, Ig alpha-1 chain C region, Ig alpha-1 chain C region TRO, Ig alpha-1 chain C region BUR, IGHA1
Purification	Protein A/G purified from cell culture supernatant.
Endotoxin level	Please contact with the lab for this information.
Accession	P01876
Stability and Storage	Use a manual defrost freezer and avoid repeated freeze-thaw cycles. Store at 4°C short term (1-2 weeks). Store at -20°C 12 months. Store at -80°C long term.

Note

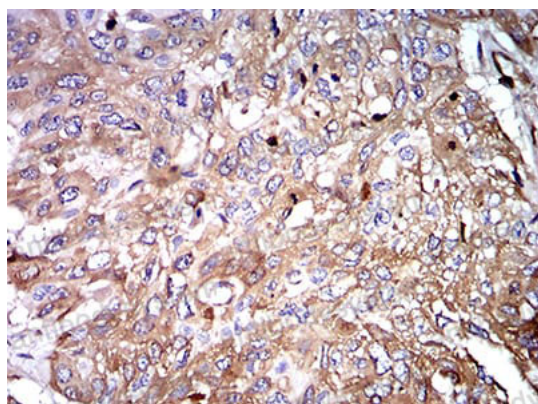
For research use only.

Data Image



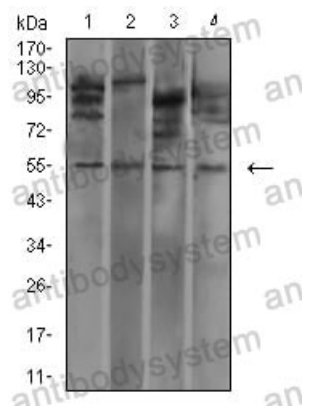
Flow Cytometry

Flow cytometric analysis of Hela cells using IghA1 mouse mAb (green) and negative control (red).



Immunohistochemical

Immunohistochemical analysis of paraffin-embedded human esophageal cancer tissues using IghA1 mouse mAb with DAB staining.



Western blot

Western blot analysis using IgH A1 mouse mAb against MOLT4 (1), L1210 (2), HepG2 (3), and COS7 (4) cell lysate.