

# Anti-CCL27/CTACK Antibody (R3X69)

## Summary

---

<b>Catalog No.</b>	RHJ88602
<b>Clone ID</b>	R3X69
<b>Host species</b>	Mouse
<b>Tested applications</b>	ELISA: 1:10000, FCM: 1:200-1:400, IF: 1:200-1:1000, IHC: 1:200-1:1000
<b>Species reactivity</b>	Human
<b>Form</b>	Liquid
<b>Storage buffer</b>	0.01M PBS, pH 7.4, 0.05% Sodium Azide.
<b>Concentration</b>	1 mg/ml
<b>Purity</b>	>95% as determined by SDS-PAGE.
<b>Clonality</b>	Monoclonal
<b>Isotype</b>	IgG1
<b>Applications</b>	ELISA, FCM, IF, IHC
<b>Target</b>	IL-11 R-alpha-locus chemokine, CC chemokine ILC, CTACK, Cutaneous T-cell-attracting chemokine, Skinkine, Small-inducible cytokine A27, CCL27, ESkin, C-C motif chemokine 27, ILC, SCYA27
<b>Purification</b>	Protein A/G purified from cell culture supernatant.
<b>Endotoxin level</b>	Please contact with the lab for this information.
<b>Accession</b>	Q9Y4X3

**Stability and Storage**

Use a manual defrost freezer and avoid repeated freeze-thaw cycles.

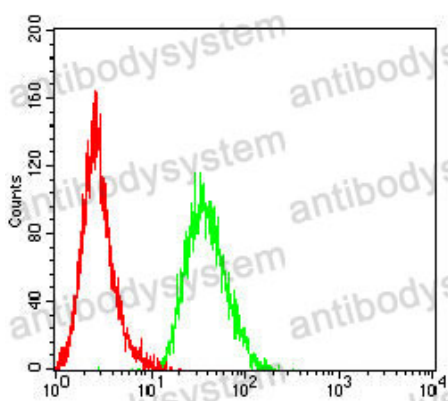
Store at 4°C short term (1-2 weeks). Store at -20°C 12 months. Store at -80°C long term.

**Note**

For research use only.

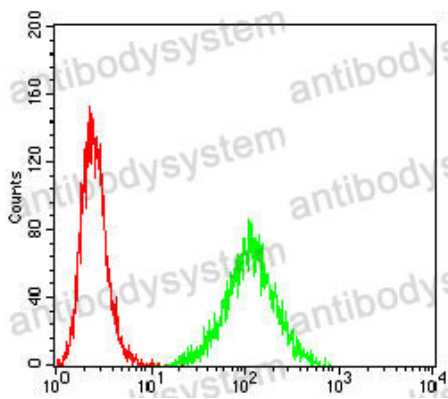
## Data Image

---



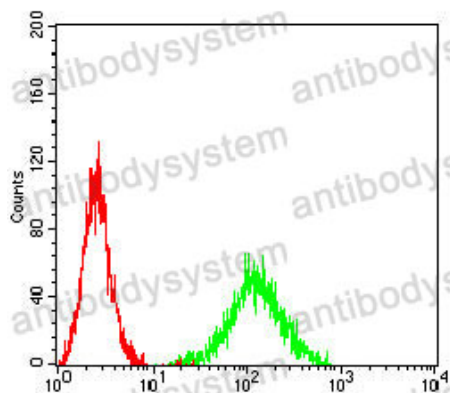
Flow Cytometry

Flow cytometric analysis of HepG2 cells using CCL27 mouse mAb (green) and negative control (red).



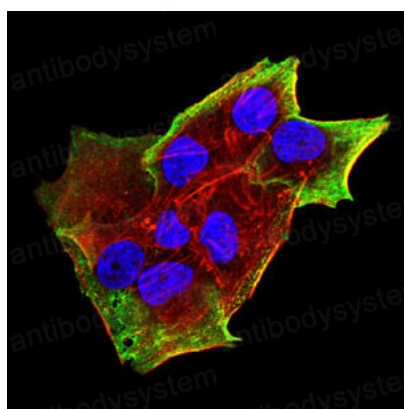
Flow Cytometry

Flow cytometric analysis of Hela cells using CCL27 mouse mAb (green) and negative control (red).



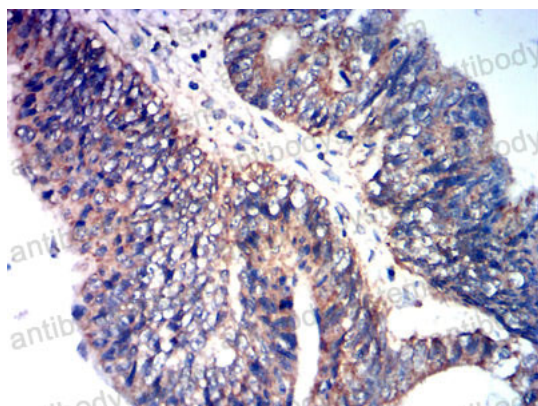
Flow Cytometry

Flow cytometric analysis of A431 cells using CCL27 mouse mAb (green) and negative control (red).



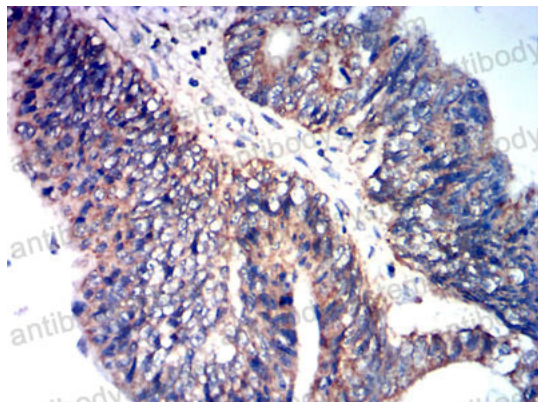
Immunofluorescence

Immunofluorescence analysis of Hela cells using CCL27 mouse mAb (green). Blue: DRAQ5 fluorescent DNA dye. Red: Actin filaments have been labeled with Alexa Fluor-555 phalloidin.



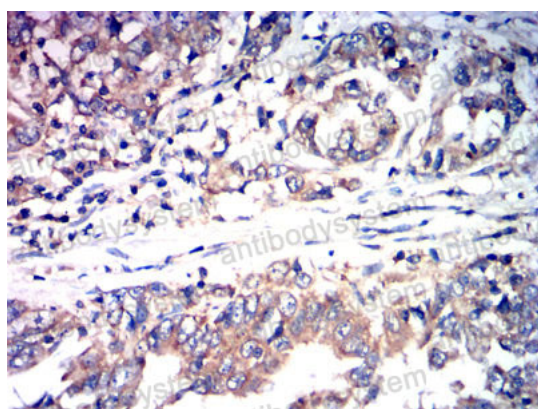
Immunohistochemical

Immunohistochemical analysis of paraffin-embedded human rectal cancer tissues using CCL27 mouse mAb with DAB staining.



Immunohistochemical

Immunohistochemical analysis of paraffin-embedded human rectal cancer tissues using CCL27 mouse mAb with DAB staining.



Immunohistochemical

Immunohistochemical analysis of paraffin-embedded human stomach cancer tissues using CCL27 mouse mAb with DAB staining.