

Anti-CD328/SIGLEC7 Antibody (R3X65)

Summary

| | |
|----------------------------|--|
| Catalog No. | RHJ85502 |
| Clone ID | R3X65 |
| Host species | Mouse |
| Tested applications | ELISA: 1:10000, FCM: 1:200-1:400, IHC: 1:200-1:1000 |
| Species reactivity | Human |
| Form | Liquid |
| Storage buffer | 0.01M PBS, pH 7.4, 0.05% Sodium Azide. |
| Concentration | 1 mg/ml |
| Purity | >95% as determined by SDS-PAGE. |
| Clonality | Monoclonal |
| Isotype | IgG1 |
| Applications | ELISA, FCM, IHC |
| Target | QA79 membrane protein, Adhesion inhibitory receptor molecule 1, D-siglec, CDw328, Siglec-7, p75, SIGLEC7, AIRM-1, Sialic acid-binding Ig-like lectin 7, CD328, AIRM1 |
| Purification | Protein A/G purified from cell culture supernatant. |
| Endotoxin level | Please contact with the lab for this information. |
| Accession | Q9Y286 |

Stability and Storage

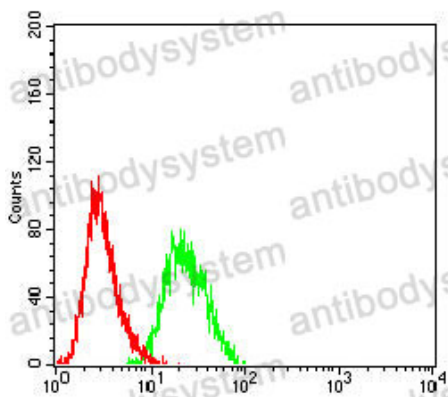
Use a manual defrost freezer and avoid repeated freeze-thaw cycles.

Store at 4°C short term (1-2 weeks). Store at -20°C 12 months. Store at -80°C long term.

Note

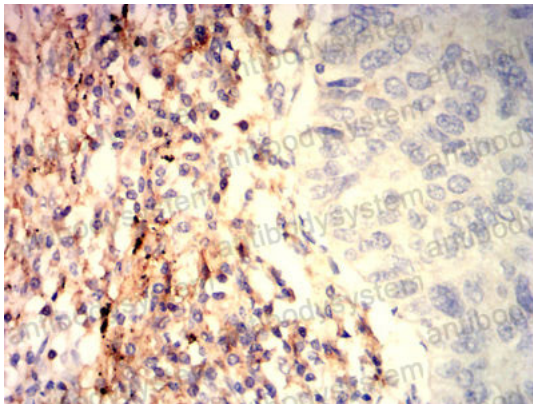
For research use only.

Data Image



Flow Cytometry

Flow cytometric analysis of HL-60 cells using CD328 mouse mAb (green) and negative control (red).



Immunohistochemical

Immunohistochemical analysis of paraffin-embedded human lung cancer tissues using CD328 mouse mAb with DAB staining.