

# Anti-CD338/ABCG2 Antibody (R3X57)

## Summary

---

<b>Catalog No.</b>	RHJ82302
<b>Clone ID</b>	R3X57
<b>Host species</b>	Mouse
<b>Tested applications</b>	ELISA: 1:10000, FCM: 1:200-1:400, IF: 1:200-1:1000, IHC: 1:200-1:1000, WB: 1:500-1:2000
<b>Species reactivity</b>	Human, Mouse
<b>Form</b>	Liquid
<b>Storage buffer</b>	0.01M PBS, pH 7.4, 0.05% Sodium Azide.
<b>Concentration</b>	1 mg/ml
<b>Purity</b>	>95% as determined by SDS-PAGE.
<b>Clonality</b>	Monoclonal
<b>Isotype</b>	IgG2b
<b>Applications</b>	ELISA, FCM, IF, IHC, WB
<b>Target</b>	Urate exporter, ABCP, BCRP1, ABCG2, CD338, BCRP, MXR, Broad substrate specificity ATP-binding cassette transporter ABCG2, Placenta-specific ATP-binding cassette transporter, Breast cancer resistance protein, Mitoxantrone resistance-associated protein, CDw338, ATP-binding cassette sub-family G member 2
<b>Purification</b>	Protein A/G purified from cell culture supernatant.
<b>Endotoxin level</b>	Please contact with the lab for this information.
<b>Accession</b>	Q9UNQ0

**Stability and Storage**

Use a manual defrost freezer and avoid repeated freeze-thaw cycles.

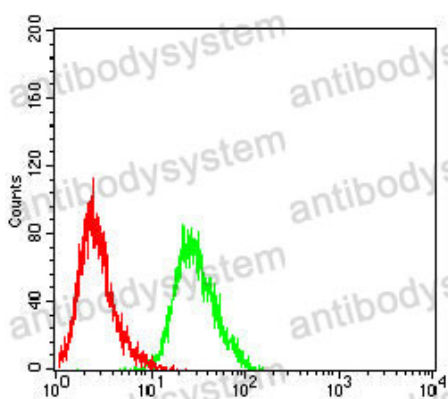
Store at 4°C short term (1-2 weeks). Store at -20°C 12 months. Store at -80°C long term.

**Note**

For research use only.

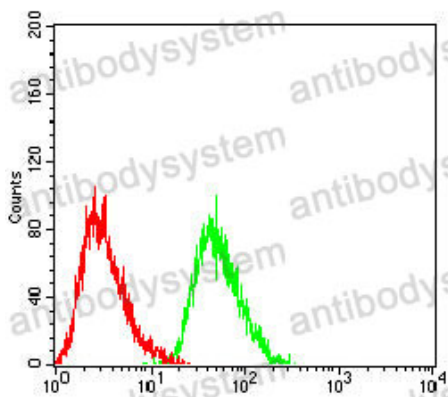
## Data Image

---



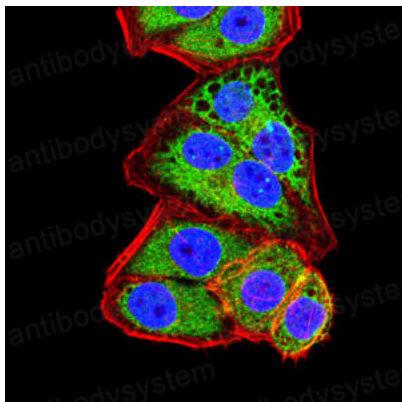
Flow Cytometry

Flow cytometric analysis of HeLa cells using CD338 mouse mAb (green) and negative control (red).

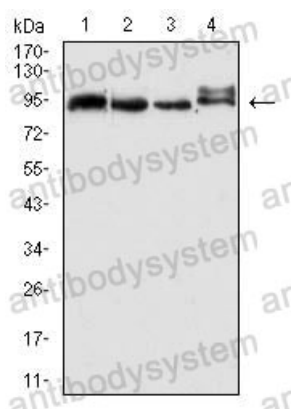


Flow Cytometry

Flow cytometric analysis of HePG2 cells using CD338 mouse mAb (green) and negative control (red).



Immunofluorescence



Western blot

Immunofluorescence analysis of HeLa cells using CD338 mouse mAb (green). Blue: DRAQ5 fluorescent DNA dye. Red: Actin filaments have been labeled with Alexa Fluor- 555 phalloidin.

Western blot analysis using CD338 mouse mAb against A549 (1), HePG2 (2), HeLa (3), and NIH/3T3 (4) cell lysate.