

Anti-CD338/ABCG2 Antibody (R3X56)

Summary

Catalog No.	RHJ82303
Clone ID	R3X56
Host species	Mouse
Tested applications	ELISA: 1:10000, IF: 1:200-1:1000, WB: 1:500-1:2000
Species reactivity	Human, Mouse, Monkey
Form	Liquid
Storage buffer	0.01M PBS, pH 7.4, 0.05% Sodium Azide.
Concentration	1 mg/ml
Purity	>95% as determined by SDS-PAGE.
Clonality	Monoclonal
Isotype	IgG1
Applications	ELISA, IF, WB
Target	Urate exporter, ABCP, BCRP1, ABCG2, CD338, BCRP, MXR, Broad substrate specificity ATP-binding cassette transporter ABCG2, Placenta-specific ATP-binding cassette transporter, Breast cancer resistance protein, Mitoxantrone resistance-associated protein, CDw338, ATP-binding cassette sub-family G member 2
Purification	Protein A/G purified from cell culture supernatant.
Endotoxin level	Please contact with the lab for this information.
Accession	Q9UNQ0

Stability and Storage

Use a manual defrost freezer and avoid repeated freeze-thaw cycles.

Store at 4°C short term (1-2 weeks). Store at -20°C 12 months. Store at -80°C long term.

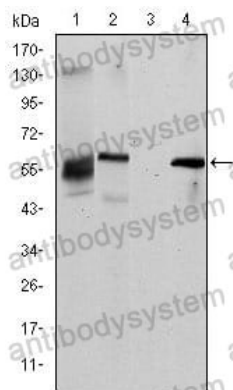
Note

For research use only.

Data Image

Immunofluorescence

Immunofluorescence analysis of HeLa cells using ABCG2 mouse mAb (green). Blue: DRAQ5 fluorescent DNA dye. Red: Actin filaments have been labeled with Alexa Fluor-555 phalloidin.



Western blot

Western blot analysis using ABCG2 mouse mAb against HepG2 (1), Cos7 (2), Jurkat (3) and NIH/3T3 (4) cell lysate.