

Anti-CD338/ABCG2 Antibody (R3X55)

Summary

Catalog No.	RHJ82304
Clone ID	R3X55
Host species	Mouse
Tested applications	ELISA: 1:10000, FCM: 1:200-1:400, IF: 1:50-1:500, IHC: 1:100-1:500, WB: 1:500-1:2000
Species reactivity	Human, Mouse, Rat, Rabbit, Monkey
Form	Liquid
Storage buffer	0.01M PBS, pH 7.4, 0.05% Sodium Azide.
Concentration	1 mg/ml
Purity	>95% as determined by SDS-PAGE.
Clonality	Monoclonal
Isotype	IgG1
Applications	ELISA, FCM, IF, IHC, WB
Target	Urate exporter, ABCP, BCRP1, ABCG2, CD338, BCRP, MXR, Broad substrate specificity ATP-binding cassette transporter ABCG2, Placenta-specific ATP-binding cassette transporter, Breast cancer resistance protein, Mitoxantrone resistance-associated protein, CDw338, ATP-binding cassette sub-family G member 2
Purification	Protein A/G purified from cell culture supernatant.
Endotoxin level	Please contact with the lab for this information.
Accession	Q9UNQ0

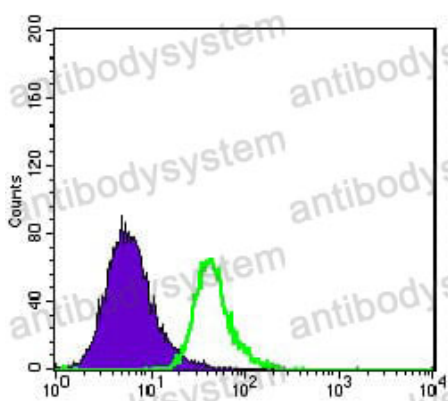
Stability and Storage

Use a manual defrost freezer and avoid repeated freeze-thaw cycles.

Store at 4°C short term (1-2 weeks). Store at -20°C 12 months. Store at -80°C long term.

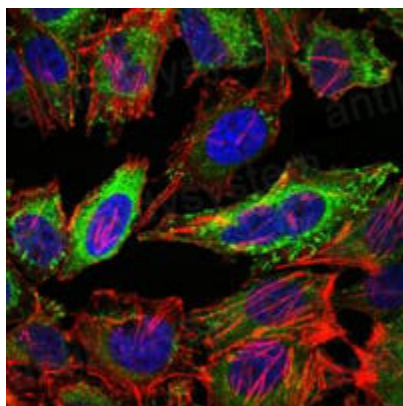
Note

For research use only.

Data Image

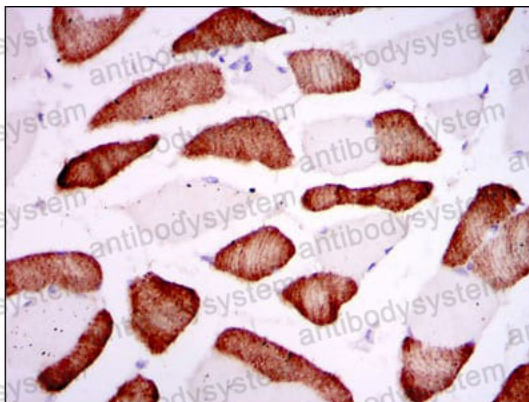
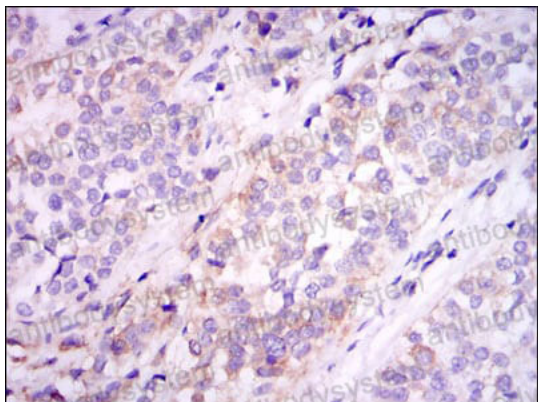
Flow Cytometry

Flow cytometric analysis of HepG2 cells using ABCG2 mouse mAb (green) and negative control (purple).



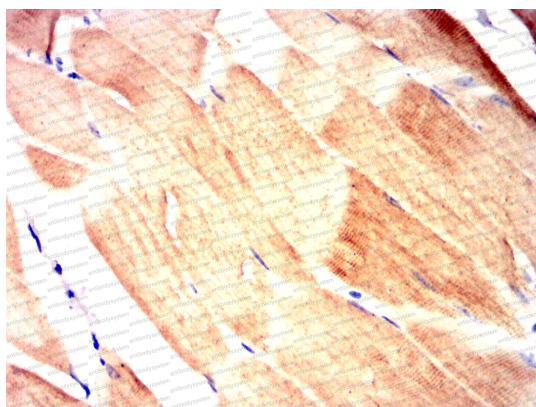
Immunofluorescence

Immunofluorescence analysis of HeLa cells using ABCG2 mouse mAb (green). Blue: DRAQ5 fluorescent DNA dye. Red: Actin filaments have been labeled with Alexa Fluor-555 phalloidin.



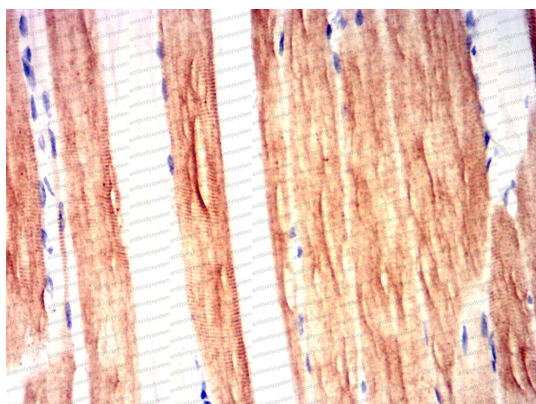
Immunohistochemical analysis of paraffin-embedded human bladder cancer tissues (left) and skeletal muscle tissues (right) using ABCG2 mouse mAb with DAB staining.

Immunohistochemical



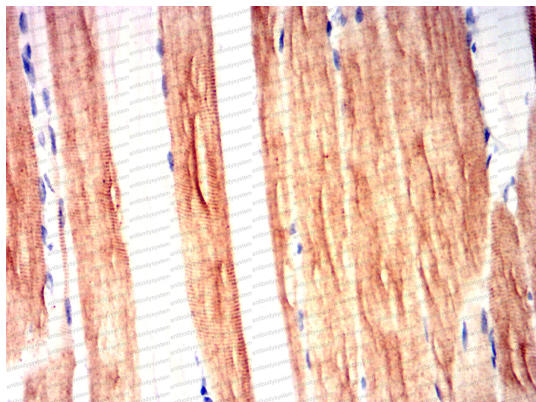
Immunohistochemical analysis of paraffin-embedded Mouse muscle using ABCG2 mouse mAb with DAB staining.

Immunohistochemical



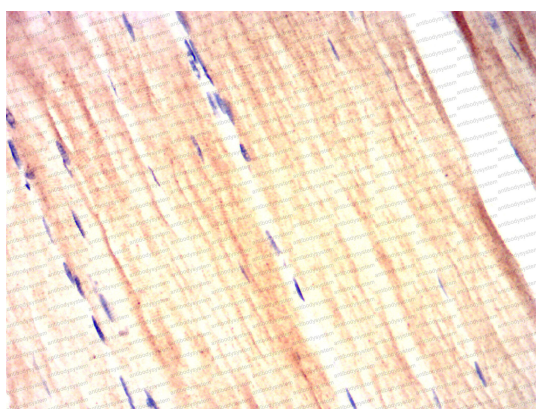
Immunohistochemical analysis of paraffin-embedded Rat muscle using ABCG2 mouse mAb with DAB staining.

Immunohistochemical



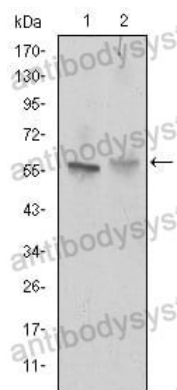
Immunohistochemical

Immunohistochemical analysis of paraffin-embedded Rat muscle using ABCG2 mouse mAb with DAB staining.



Immunohistochemical

Immunohistochemical analysis of paraffin-embedded Rabbit muscle using ABCG2 mouse mAb with DAB staining.



Western blot

Western blot analysis using ABCG2 mouse mAb against NIH/3T3 (1) and Cos7 (2) cell lysate.