

Anti-STEAP1 Antibody (R3X34)

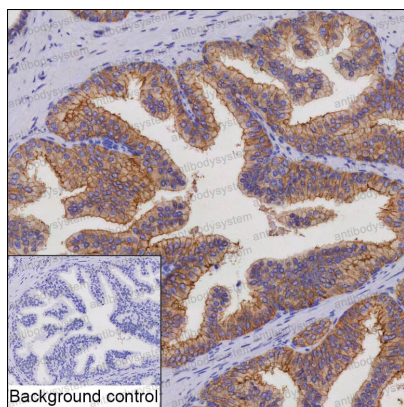
Summary

Catalog No.	RHJ76001
Clone ID	R3X34
Host species	Mouse
Tested applications	IHC: 1:20-1:100
Species reactivity	Human
Form	Liquid
Storage buffer	0.01M PBS, pH 7.4, 0.05% Sodium Azide.
Concentration	1 mg/ml
Purity	>95% as determined by SDS-PAGE.
Clonality	Monoclonal
Isotype	IgG1
Applications	IHC
Target	PRSS24, STEAP1, STEAP, Metalloreductase STEAP1, Six-transmembrane epithelial antigen of prostate 1
Purification	Protein A/G purified from cell culture supernatant.
Endotoxin level	Please contact with the lab for this information.
Accession	Q9UHE8
Stability and Storage	Use a manual defrost freezer and avoid repeated freeze-thaw cycles. Store at 4°C short term (1-2 weeks). Store at -20°C 12 months. Store at -80°C long term.

Note

For research use only.

Data Image



Immunohistochemical

IHC-P analysis of prostate tissue by STEAP1 antibody (RHJ76001). IHC-P was performed using sections of the formalin-fixed paraffin-embedded prostate tissue; Result: Glandular cells are positively stained at the cytoplasm and cell membrane.