

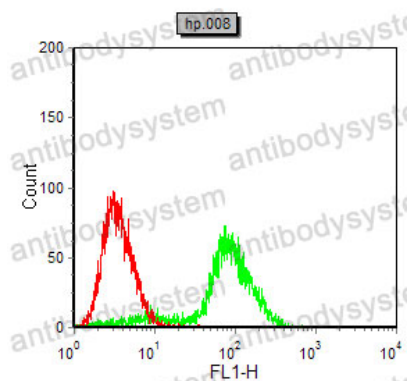
# Anti-DKK3 Antibody (R3X29)

## Summary

---

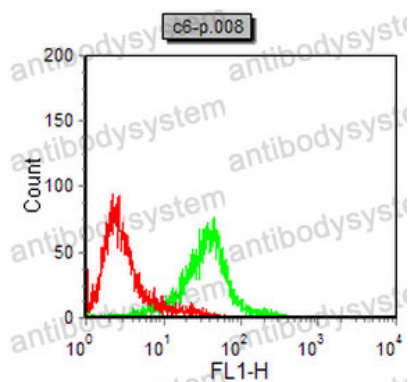
<b>Catalog No.</b>	RHJ73202
<b>Clone ID</b>	R3X29
<b>Host species</b>	Mouse
<b>Tested applications</b>	ELISA: 1:10000, FCM: 1:200-1:400, IHC: 1:200-1:1000, WB: 1:500-1:1000
<b>Species reactivity</b>	Human, Mouse, Rat, Rabbit, Monkey
<b>Form</b>	Liquid
<b>Storage buffer</b>	0.01M PBS, pH 7.4, 0.05% Sodium Azide.
<b>Concentration</b>	1 mg/ml
<b>Purity</b>	>95% as determined by SDS-PAGE.
<b>Clonality</b>	Monoclonal
<b>Isotype</b>	IgG1
<b>Applications</b>	ELISA, FCM, IHC, WB
<b>Target</b>	Dkk-3, Dickkopf-related protein 3, Dickkopf-3, hDkk-3, DKK3, REIC
<b>Purification</b>	Protein A/G purified from cell culture supernatant.
<b>Endotoxin level</b>	Please contact with the lab for this information.
<b>Accession</b>	Q9UBP4
<b>Stability and Storage</b>	Use a manual defrost freezer and avoid repeated freeze-thaw cycles. Store at 4°C short term (1-2 weeks). Store at -20°C 12 months. Store at -80°C long term.
<b>Note</b>	For research use only.

## Data Image



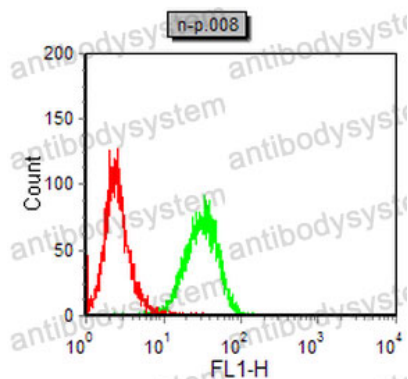
Flow Cytometry

Flow cytometric analysis of HeLa cells using DKK3 mouse mAb (green) and negative control (red).



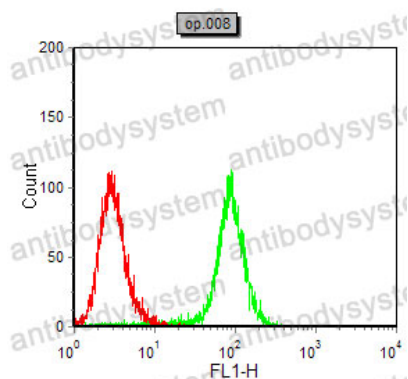
Flow Cytometry

Flow cytometric analysis of C6 cells using DKK3 mouse mAb (green) and negative control (red).



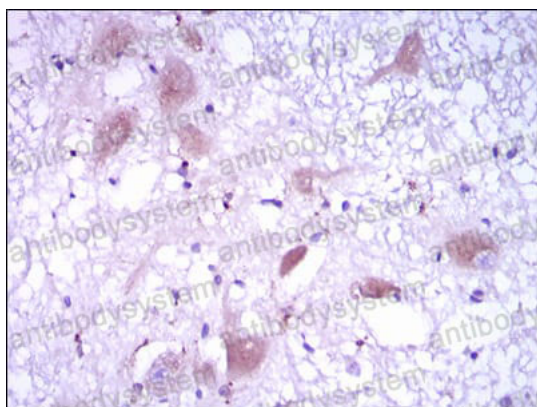
Flow Cytometry

Flow cytometric analysis of NIH/3T3 cells using DKK3 mouse mAb (green) and negative control (red).



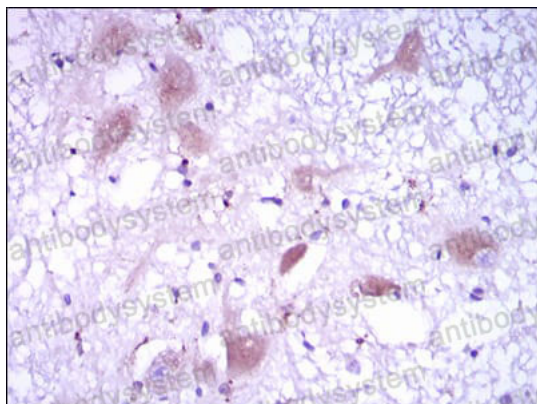
Flow Cytometry

Flow cytometric analysis of COS7 cells using DKK3 mouse mAb (green) and negative control (red).



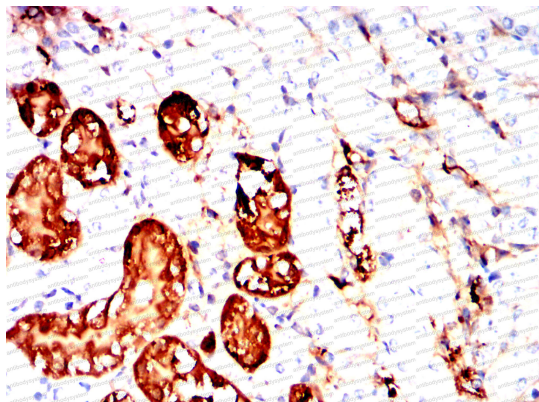
Immunohistochemical

Immunohistochemical analysis of paraffin-embedded human brain tissues using DKK3 mouse mAb with DAB staining.



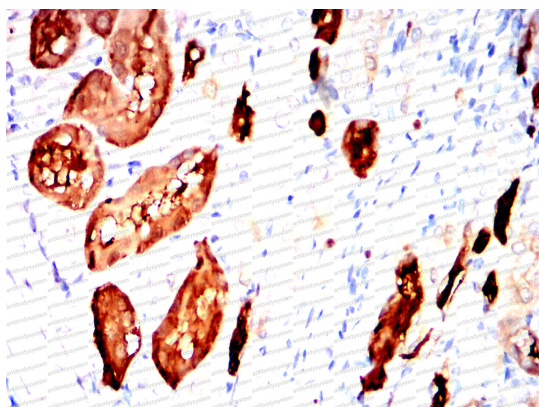
Immunohistochemical

Immunohistochemical analysis of paraffin-embedded human brain tissues using DKK3 mouse mAb with DAB staining.



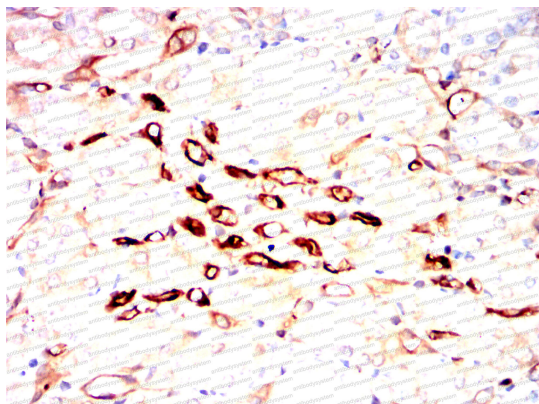
Immunohistochemical

Immunohistochemical analysis of paraffin-embedded Mouse kidney using DKK3 mouse mAb with DAB staining.



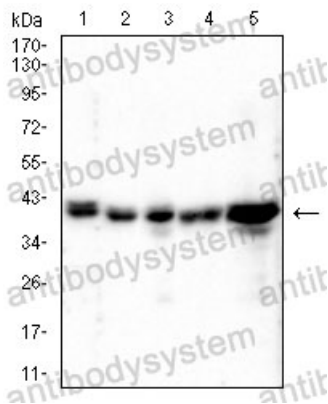
Immunohistochemical

Immunohistochemical analysis of paraffin-embedded Rat kidney using DKK3 mouse mAb with DAB staining.



Immunohistochemical

Immunohistochemical analysis of paraffin-embedded Rabbit kidney using DKK3 mouse mAb with DAB staining.



Western blot

Western blot analysis using Desmin mouse mAb against PC-12(1),NIH/3T3(2),NRK(3),C2C12(4),C6(5), cell lysate.