

Anti-PDP1 Antibody (R3X11)

Summary

Catalog No.	RHJ70601
Clone ID	R3X11
Host species	Mouse
Tested applications	IHC: 1:100-1:200
Species reactivity	Human
Form	Liquid
Storage buffer	0.01M PBS, pH 7.4, 0.05% Sodium Azide.
Concentration	1 mg/ml
Purity	>95% as determined by SDS-PAGE.
Clonality	Monoclonal
Isotype	IgG1
Applications	IHC
Target	PDP 1, Pyruvate dehydrogenase phosphatase catalytic subunit 1, PDP1, PDPC 1, [Pyruvate dehydrogenase [acetyl-transferring]]-phosphatase 1, mitochondrial, PPM2C, Protein phosphatase 2C, PDP
Purification	Protein A/G purified from cell culture supernatant.
Endotoxin level	Please contact with the lab for this information.
Accession	Q9P0J1

Stability and Storage

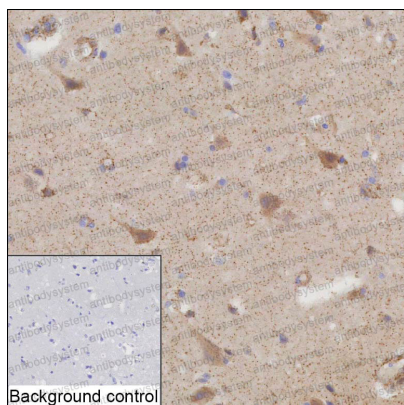
Use a manual defrost freezer and avoid repeated freeze-thaw cycles.

Store at 4°C short term (1-2 weeks). Store at -20°C 12 months. Store at -80°C long term.

Note

For research use only.

Data Image



Immunohistochemical

IHC-P analysis of brain tissue by PDP1 antibody (RHJ70601). IHC-P was performed using sections of the formalin-fixed paraffin-embedded brain tissue.. Result: Neuronal cells are positively stained at the cytoplasm. ;