

Anti-IL1RAPL1 Antibody (R3X06)

Summary

Catalog No.	RHJ70001
Clone ID	R3X06
Host species	Mouse
Tested applications	ELISA: 1:10000, WB: 1:500-1:2000
Species reactivity	Human
Form	Liquid
Storage buffer	0.01M PBS, pH 7.4, 0.05% Sodium Azide.
Concentration	1 mg/ml
Purity	>95% as determined by SDS-PAGE.
Clonality	Monoclonal
Isotype	IgG1
Applications	ELISA, WB
Target	Oligophrenin-4, IL1RAPL-1, Three immunoglobulin domain-containing IL-1 receptor-related 2, Interleukin-1 receptor accessory protein-like 1, IL1RAPL1, IL-1RAPL-1, X-linked interleukin-1 receptor accessory protein-like 1, OPHN4, IL-1-RAPL-1, TIGIRR-2
Purification	Protein A/G purified from cell culture supernatant.
Endotoxin level	Please contact with the lab for this information.
Accession	Q9NZN1

Stability and Storage

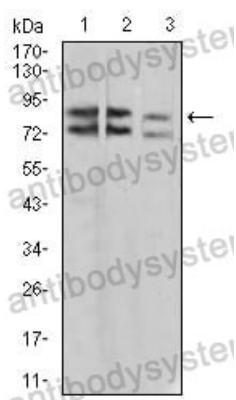
Use a manual defrost freezer and avoid repeated freeze-thaw cycles.

Store at 4°C short term (1-2 weeks). Store at -20°C 12 months. Store at -80°C long term.

Note

For research use only.

Data Image



Western blot

Western blot analysis using IL1RAPL1 mouse mAb against A431 (1), SK-Hep-1 (2), and HL-7702 (3) cell lysate.