

Anti-ATG3 Antibody (R3W98)

Summary

Catalog No.	RHJ67602
Clone ID	R3W98
Host species	Mouse
Tested applications	ELISA: 1:10000, FCM: 1:200-1:400, IF: 1:200-1:1000, IHC: 1:200-1:1000, WB: 1:500-1:2000
Species reactivity	Human
Form	Liquid
Storage buffer	0.01M PBS, pH 7.4, 0.05% Sodium Azide.
Concentration	1 mg/ml
Purity	>95% as determined by SDS-PAGE.
Clonality	Monoclonal
Isotype	IgG1
Applications	ELISA, FCM, IF, IHC, WB
Target	hApg3, APG3, Protein PC3-96, ATG3, APG3L, Ubiquitin-like-conjugating enzyme ATG3, Autophagy-related protein 3, APG3-like
Purification	Protein A/G purified from cell culture supernatant.
Endotoxin level	Please contact with the lab for this information.
Accession	Q9NT62

Stability and Storage

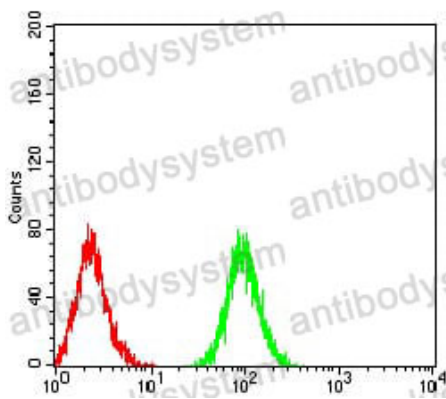
Use a manual defrost freezer and avoid repeated freeze-thaw cycles.

Store at 4°C short term (1-2 weeks). Store at -20°C 12 months. Store at -80°C long term.

Note

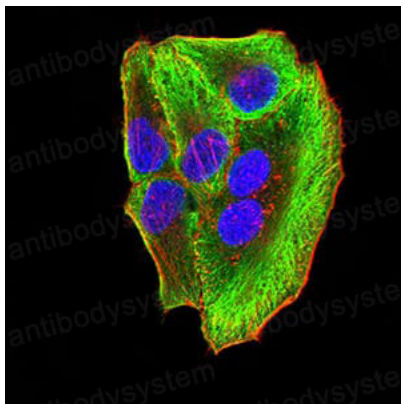
For research use only.

Data Image



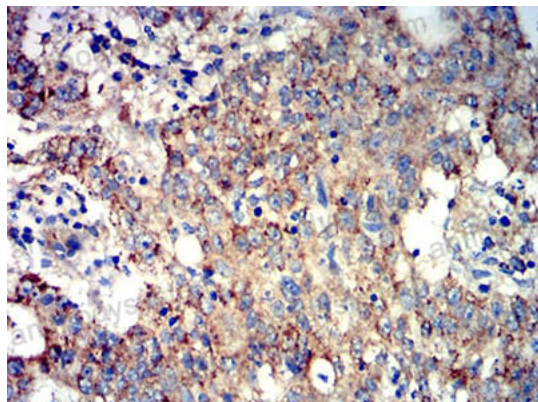
Flow Cytometry

Flow cytometric analysis of Jurkat cells using ATG3 mouse mAb (green) and negative control (red).



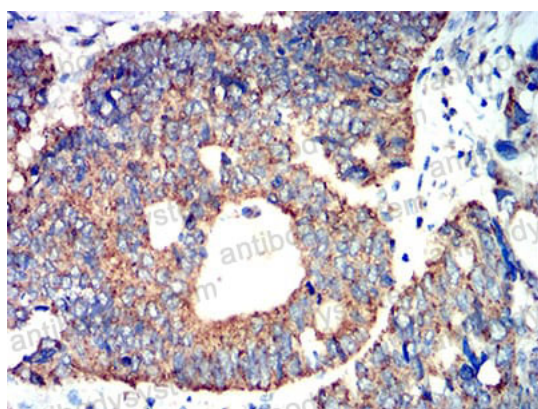
Immunofluorescence

Immunofluorescence analysis of SMMC-7721 cells using ATG3 mouse mAb (green). Blue: DRAQ5 fluorescent DNA dye. Red: Actin filaments have been labeled with Alexa Fluor-555 phalloidin.



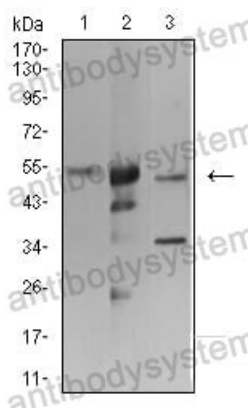
Immunohistochemical

Immunohistochemical analysis of paraffin-embedded human stomach cancer tissues using ATG3 mouse mAb with DAB staining.



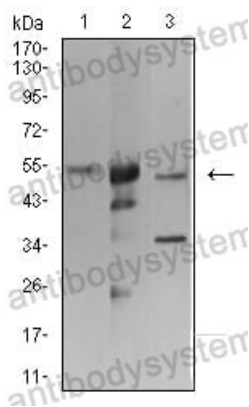
Immunohistochemical

Immunohistochemical analysis of paraffin-embedded human rectum cancer tissues using ATG3 mouse mAb with DAB staining.



Western blot

Western blot analysis using ATG3 mouse mAb against K562 (1), Hela (2), and THP-1 (3) cell lysate.



Western blot

Western blot analysis using ATG3 mouse mAb against K562 (1), HeLa (2), and THP-1 (3) cell lysate.