

Anti-ATG3 Antibody (R3W97)

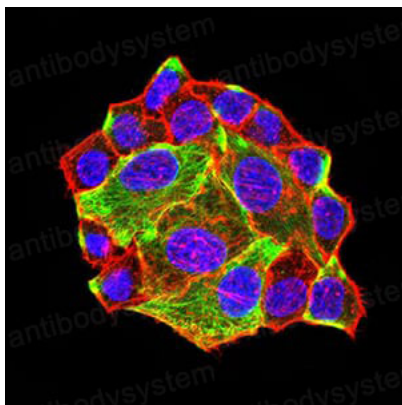
Summary

Catalog No.	RHJ67603
Clone ID	R3W97
Host species	Mouse
Tested applications	ELISA: 1:10000, IF: 1:200-1:1000, IHC: 1:200-1:1000, WB: 1:500-1:2000
Species reactivity	Human, Monkey
Form	Liquid
Storage buffer	0.01M PBS, pH 7.4, 0.05% Sodium Azide.
Concentration	1 mg/ml
Purity	>95% as determined by SDS-PAGE.
Clonality	Monoclonal
Isotype	IgG1
Applications	ELISA, IF, IHC, WB
Target	hApg3, APG3, Protein PC3-96, ATG3, APG3L, Ubiquitin-like-conjugating enzyme ATG3, Autophagy-related protein 3, APG3-like
Purification	Protein A/G purified from cell culture supernatant.
Endotoxin level	Please contact with the lab for this information.
Accession	Q9NT62
Stability and Storage	Use a manual defrost freezer and avoid repeated freeze-thaw cycles. Store at 4°C short term (1-2 weeks). Store at -20°C 12 months. Store at -80°C long term.

Note

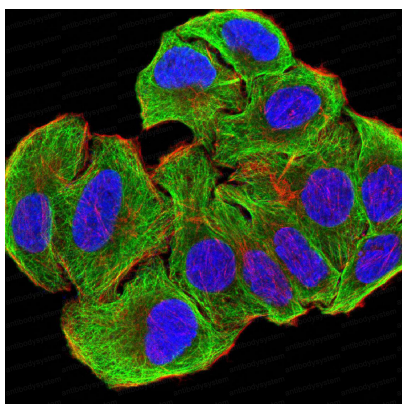
For research use only.

Data Image



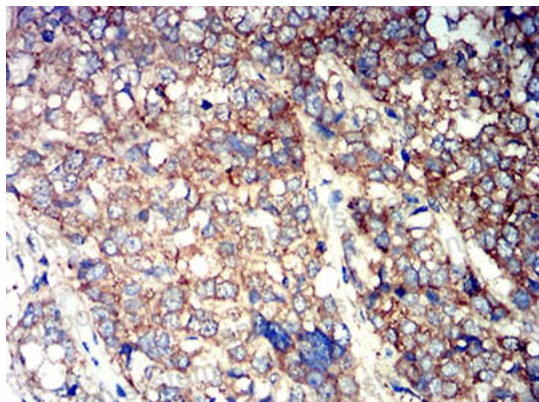
Immunofluorescence

Immunofluorescence analysis of HeLa cells using ATG3 mouse mAb (green). Blue: DRAQ5 fluorescent DNA dye. Red: Actin filaments have been labeled with Alexa Fluor- 555 phalloidin.



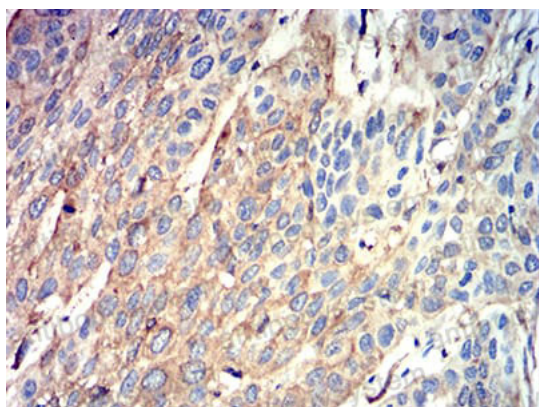
Immunofluorescence

Immunofluorescence analysis of SMMC-7721 cells using ATG3 mouse mAb (green). Blue: DRAQ5 fluorescent DNA dye. Red: Actin filaments have been labeled with Alexa Fluor- 555 phalloidin.



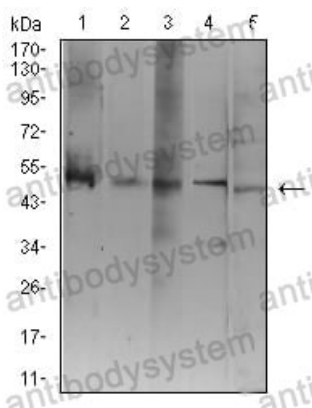
Immunohistochemical

Immunohistochemical analysis of paraffin-embedded human breast cancer tissues using ATG3 mouse mAb with DAB staining.



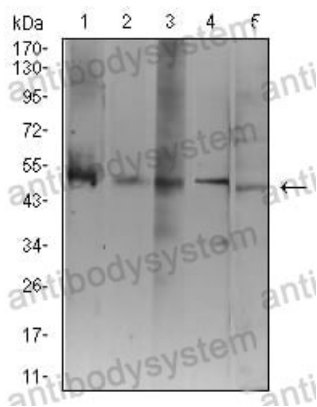
Immunohistochemical

Immunohistochemical analysis of paraffin-embedded human esophageal cancer tissues using ATG3 mouse mAb with DAB staining.



Western blot

Western blot analysis using ATG3 mouse mAb against Jurkat (1), K562 (2), Hela (3), THP-1 (4), and COS7 (5) cell lysate.



Western blot

Western blot analysis using ATG3 mouse mAb against Jurkat (1), K562 (2), HeLa (3), THP-1 (4), and COS7 (5) cell lysate.