

Anti-CD319/SLAMF7 Antibody (R3W83)

Summary

Catalog No.	RHJ64002
Clone ID	R3W83
Host species	Mouse
Tested applications	ELISA: 1:10000, FCM: 1:200-1:400, IHC: 1:100-1:500, WB: 1:500-1:2000
Species reactivity	Human, Mouse, Rat, Rabbit, Monkey
Form	Liquid
Storage buffer	0.01M PBS, pH 7.4, 0.05% Sodium Azide.
Concentration	1 mg/ml
Purity	>95% as determined by SDS-PAGE.
Clonality	Monoclonal
Isotype	IgG1
Applications	ELISA, FCM, IHC, WB
Target	SLAMF7, CRACC, Protein 19A, SLAM family member 7, CD2-like receptor-activating cytotoxic cells, Membrane protein FOAP-12, CD319, Novel Ly9, CD2 subset 1, CS1
Purification	Protein A/G purified from cell culture supernatant.
Endotoxin level	Please contact with the lab for this information.
Accession	Q9NQ25

Stability and Storage

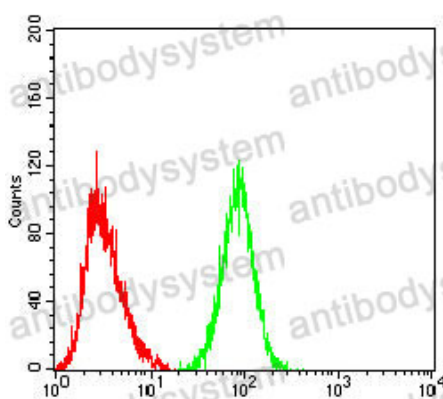
Use a manual defrost freezer and avoid repeated freeze-thaw cycles.

Store at 4°C short term (1-2 weeks). Store at -20°C 12 months. Store at -80°C long term.

Note

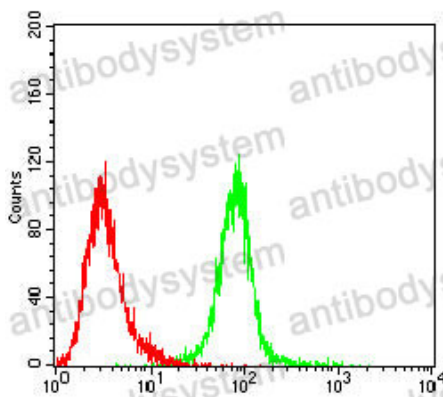
For research use only.

Data Image



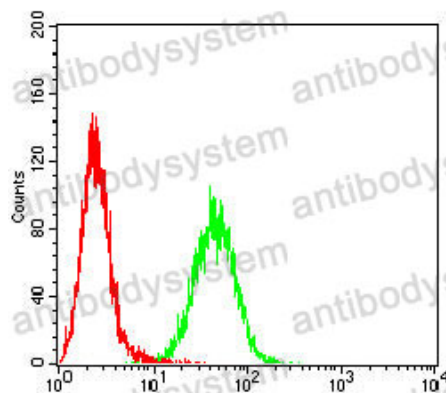
Flow Cytometry

Flow cytometric analysis of K562 cells using CD319 mouse mAb (green) and negative control (red).



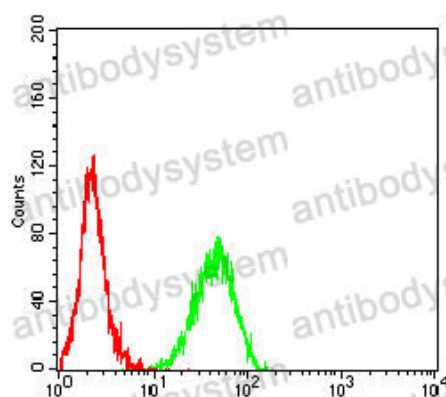
Flow Cytometry

Flow cytometric analysis of U937 cells using CD319 mouse mAb (green) and negative control (red).



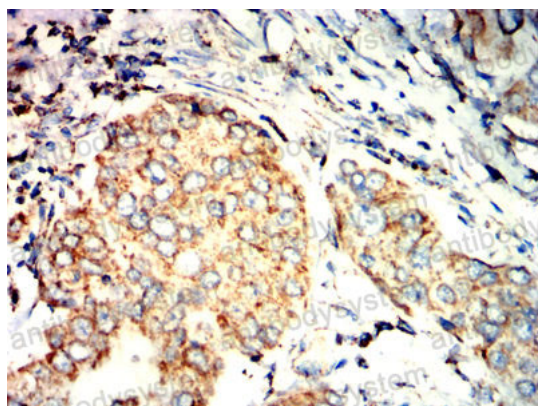
Flow Cytometry

Flow cytometric analysis of THP-1 cells using CD319 mouse mAb (green) and negative control (red).



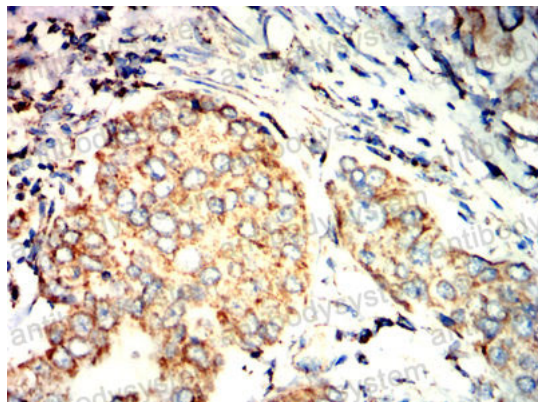
Flow Cytometry

Flow cytometric analysis of MOLT4 cells using CD319 mouse mAb (green) and negative control (red).



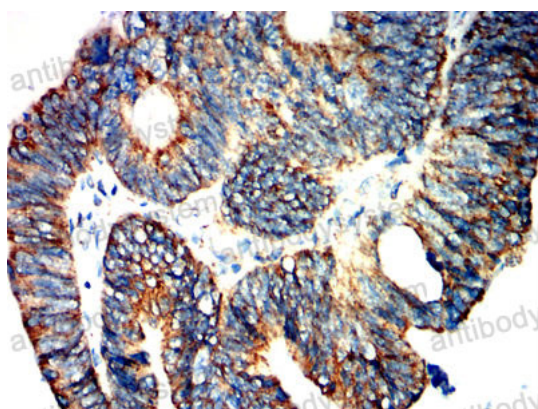
Immunohistochemical

Immunohistochemical analysis of paraffin-embedded human breast cancer tissues using CD319 mouse mAb with DAB staining.



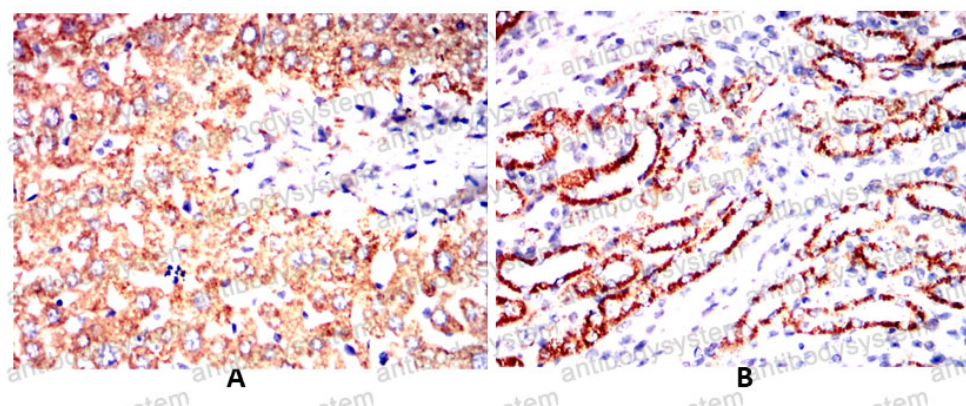
Immunohistochemical

Immunohistochemical analysis of paraffin-embedded human breast cancer tissues using CD319 mouse mAb with DAB staining.



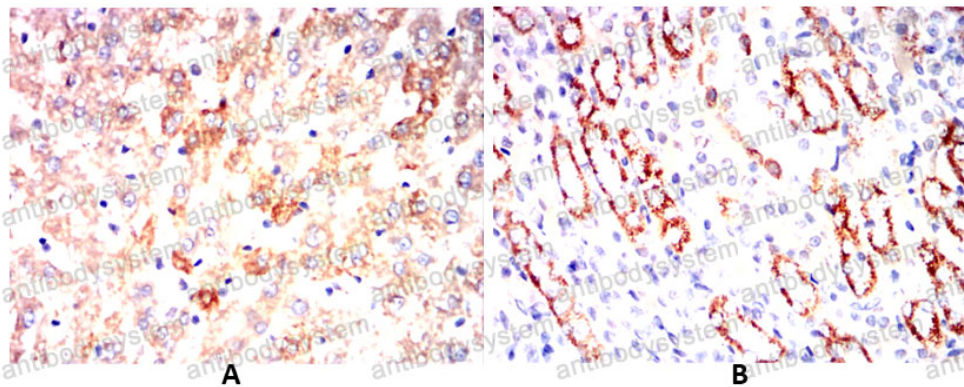
Immunohistochemical

Immunohistochemical analysis of paraffin-embedded human rectal cancer tissues using CD319 mouse mAb with DAB staining.



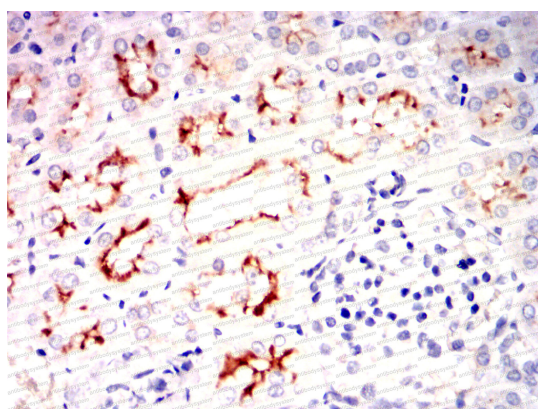
Immunohistochemical

Immunohistochemical analysis of paraffin-embedded Mouse liver(A) Mouse kidney(B) using CD319 mouse mAb with DAB staining.



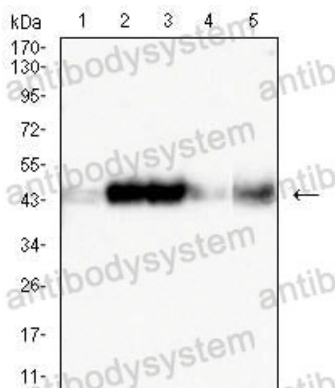
Immunohistochemical analysis of paraffin-embedded Rat liver(A) Rat kidney(B) using CD319 mouse mAb with DAB staining.

Immunohistochemical



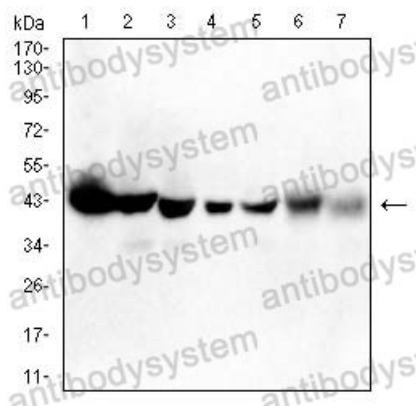
Immunohistochemical analysis of paraffin-embedded Rabbit kidney using CD319 mouse mAb with DAB staining.

Immunohistochemical



Western blot analysis using CD319 mouse mAb against K562 (1), HL-60 (2), Ramos (3), Jurkat (4), and THP-1 (5) cell lysate.

Western blot



Western blot

Western blot analysis using
CD319 mouse mAb against Rat
liver(1)PC-
12(2)Raw264.7(3)NRK(4)COS-
7(5)HL-60(6)Ramos(7) cell lysate.