

Anti-CD354/TREM1 Antibody (R3W75)

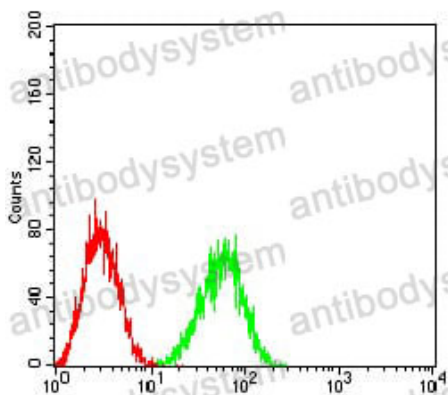
Summary

Catalog No.	RHJ62502
Clone ID	R3W75
Host species	Mouse
Tested applications	ELISA: 1:10000, FCM: 1:200-1:400, WB: 1:500-1:2000
Species reactivity	Human, Rat, Monkey
Form	Liquid
Storage buffer	0.01M PBS, pH 7.4, 0.05% Sodium Azide.
Concentration	1 mg/ml
Purity	>95% as determined by SDS-PAGE.
Clonality	Monoclonal
Isotype	IgG1
Applications	ELISA, FCM, WB
Target	TREM1, Triggering receptor expressed on monocytes 1, Triggering receptor expressed on myeloid cells 1, TREM-1, CD354
Purification	Protein A/G purified from cell culture supernatant.
Endotoxin level	Please contact with the lab for this information.
Accession	Q9NP99
Stability and Storage	Use a manual defrost freezer and avoid repeated freeze-thaw cycles. Store at 4°C short term (1-2 weeks). Store at -20°C 12 months. Store at -80°C long term.

Note

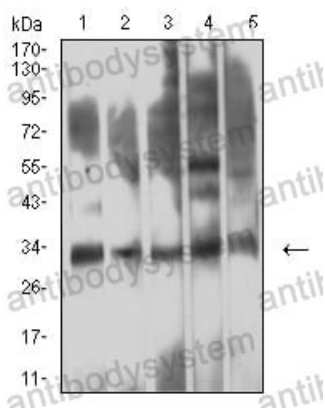
For research use only.

Data Image



Flow Cytometry

Flow cytometric analysis of HL-60 cells using CD354 mouse mAb (green) and negative control (red).



Western blot

Western blot analysis using CD354 mouse mAb against HepG2 (1), COS7 (2), A549 (3), SPC-A-1 (4), and C6 (5) cell lysate.