

# Anti-CD209 Antibody (R3W70)

## Summary

---

<b>Catalog No.</b>	RHJ61602
<b>Clone ID</b>	R3W70
<b>Host species</b>	Mouse
<b>Tested applications</b>	ELISA: 1:10000, FCM: 1:200-1:400, WB: 1:500-1:2000
<b>Species reactivity</b>	Human
<b>Form</b>	Liquid
<b>Storage buffer</b>	0.01M PBS, pH 7.4, 0.05% Sodium Azide.
<b>Concentration</b>	1 mg/ml
<b>Purity</b>	>95% as determined by SDS-PAGE.
<b>Clonality</b>	Monoclonal
<b>Isotype</b>	IgG1
<b>Applications</b>	ELISA, FCM, WB
<b>Target</b>	CD209, DC-SIGN1, Dendritic cell-specific ICAM-3-grabbing non-integrin 1, CD209 antigen, CLEC4L, DC-SIGN, C-type lectin domain family 4 member L
<b>Purification</b>	Protein A/G purified from cell culture supernatant.
<b>Endotoxin level</b>	Please contact with the lab for this information.
<b>Accession</b>	Q9NNX6

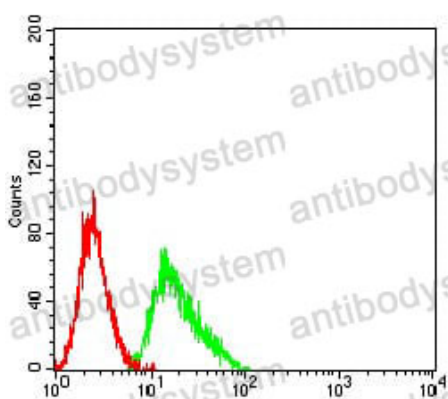
**Stability and Storage**

Use a manual defrost freezer and avoid repeated freeze-thaw cycles.

Store at 4°C short term (1-2 weeks). Store at -20°C 12 months. Store at -80°C long term.

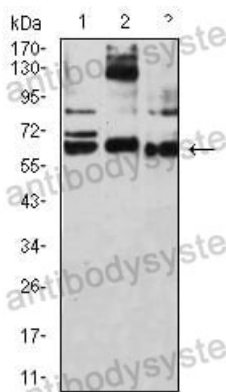
**Note**

For research use only.

**Data Image**

Flow Cytometry

Flow cytometric analysis of Ramos cells using CD209 mouse mAb (green) and negative control (red).



Western blot

Western blot analysis using CD209 mouse mAb against THP-1 (1), HL-60 (2), and A431 (3) cell lysate.