

# Anti-CD209 Antibody (R3W69)

## Summary

---

<b>Catalog No.</b>	RHJ61603
<b>Clone ID</b>	R3W69
<b>Host species</b>	Mouse
<b>Tested applications</b>	ELISA: 1:10000, FCM: 1:200-1:400, WB: 1:500-1:2000
<b>Species reactivity</b>	Human
<b>Form</b>	Liquid
<b>Storage buffer</b>	0.01M PBS, pH 7.4, 0.05% Sodium Azide.
<b>Concentration</b>	1 mg/ml
<b>Purity</b>	>95% as determined by SDS-PAGE.
<b>Clonality</b>	Monoclonal
<b>Isotype</b>	IgG1
<b>Applications</b>	ELISA, FCM, WB
<b>Target</b>	CD209, DC-SIGN1, Dendritic cell-specific ICAM-3-grabbing non-integrin 1, CD209 antigen, CLEC4L, DC-SIGN, C-type lectin domain family 4 member L
<b>Purification</b>	Protein A/G purified from cell culture supernatant.
<b>Endotoxin level</b>	Please contact with the lab for this information.
<b>Accession</b>	Q9NNX6

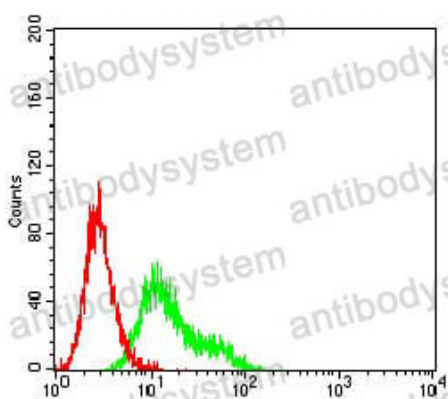
**Stability and Storage**

Use a manual defrost freezer and avoid repeated freeze-thaw cycles.

Store at 4°C short term (1-2 weeks). Store at -20°C 12 months. Store at -80°C long term.

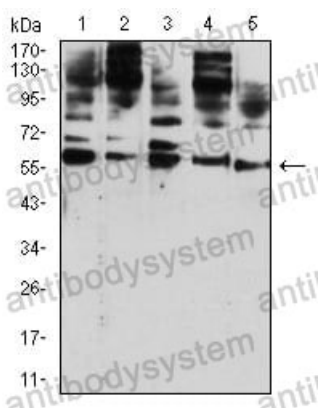
**Note**

For research use only.

**Data Image**

Flow Cytometry

Flow cytometric analysis of Ramos cells using CD209 mouse mAb (green) and negative control (red).



Western blot

Western blot analysis using CD209 mouse mAb against Hela (1), U937 (2), THP-1 (3), HL-60 (4), and A431 (5) cell lysate.