

# Anti-LC3A Antibody (R3W50)

## Summary

---

<b>Catalog No.</b>	RHJ56804
<b>Clone ID</b>	R3W50
<b>Host species</b>	Mouse
<b>Tested applications</b>	IHC: 1:50-1:100, WB: 1:500-1:1000
<b>Species reactivity</b>	Human, Mouse, Rat
<b>Form</b>	Liquid
<b>Storage buffer</b>	0.01M PBS, pH 7.4, 0.5% BSA, 0.05% Sodium Azide and 50% Glycerol.
<b>Concentration</b>	1 mg/ml
<b>Purity</b>	>95% as determined by SDS-PAGE.
<b>Clonality</b>	Monoclonal
<b>Isotype</b>	IgG1
<b>Applications</b>	IHC, WB
<b>Target</b>	Autophagy-related protein LC3 A, Autophagy-related ubiquitin-like modifier LC3 A, MAP1 light chain 3-like protein 1, Microtubule-associated protein 1 light chain 3 alpha, MAP1A/MAP1B LC3 A, MAP1LC3A, Microtubule-associated proteins 1A/1B light chain 3A, MAP1A/MAP1B light chain 3 A
<b>Purification</b>	Protein A/G purified from cell culture supernatant.
<b>Endotoxin level</b>	Please contact with the lab for this information.
<b>Accession</b>	Q9H492

**Stability and Storage**

Use a manual defrost freezer and avoid repeated freeze-thaw cycles.

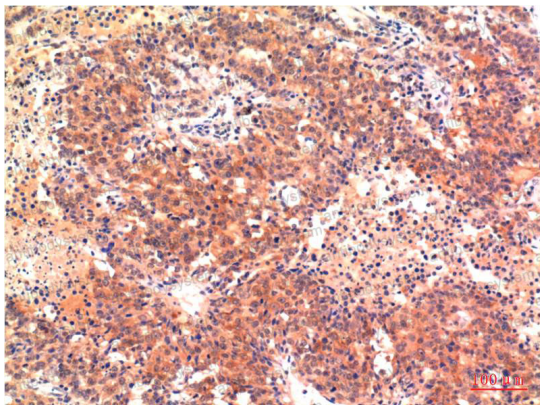
Store at 4°C short term (1-2 weeks). Store at -20°C 12 months. Store at -80°C long term.

**Note**

For research use only.

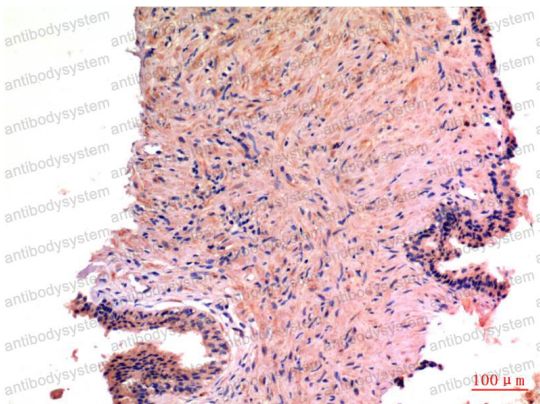
**Data Image**

---



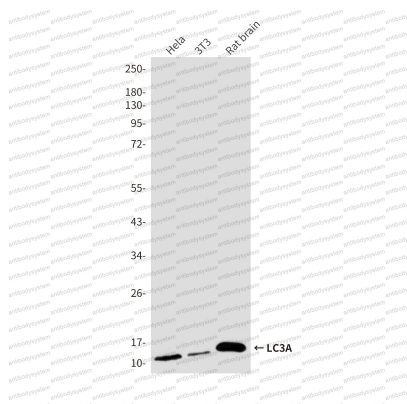
Immunohistochemical

Immunohistochemistry analysis of paraffin-embedded Human Hepatocarcinoma Tissue using LC3A antibody. High-pressure and temperature Sodium Citrate pH 6.0 was used for antigen retrieval.



Immunohistochemical

Immunohistochemistry analysis of paraffin-embedded Human Prostate Carcinoma Tissue using LC3A antibody. High-pressure and temperature Sodium Citrate pH 6.0 was used for antigen retrieval.



Western blot

Western blot analysis of LC3A (8F5) in Hela lysates, 3T3 lysates, rat Brain lysates using LC3A antibody.