

Anti-MAP1LC3A Antibody (R3W49)

Summary

Catalog No.	RHJ56805
Clone ID	R3W49
Host species	Mouse
Tested applications	ELISA: 1:10000, FCM: 1:200-1:400, IHC: 1:200-1:1000
Species reactivity	Human
Form	Liquid
Storage buffer	0.01M PBS, pH 7.4, 0.05% Sodium Azide.
Concentration	1 mg/ml
Purity	>95% as determined by SDS-PAGE.
Clonality	Monoclonal
Isotype	IgG1
Applications	ELISA, FCM, IHC
Target	Autophagy-related protein LC3 A, Autophagy-related ubiquitin-like modifier LC3 A, MAP1 light chain 3-like protein 1, Microtubule-associated protein 1 light chain 3 alpha, MAP1A/MAP1B LC3 A, MAP1LC3A, Microtubule-associated proteins 1A/1B light chain 3A, MAP1A/MAP1B light chain 3 A
Purification	Protein A/G purified from cell culture supernatant.
Endotoxin level	Please contact with the lab for this information.
Accession	Q9H492

Stability and Storage

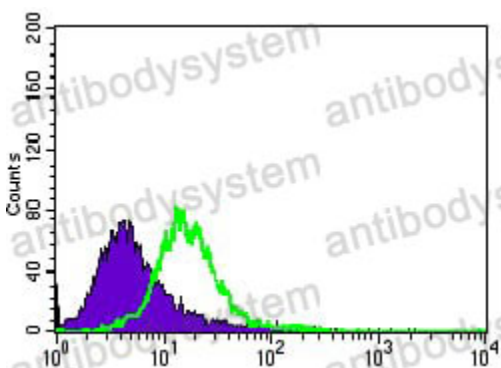
Use a manual defrost freezer and avoid repeated freeze-thaw cycles.

Store at 4°C short term (1-2 weeks). Store at -20°C 12 months. Store at -80°C long term.

Note

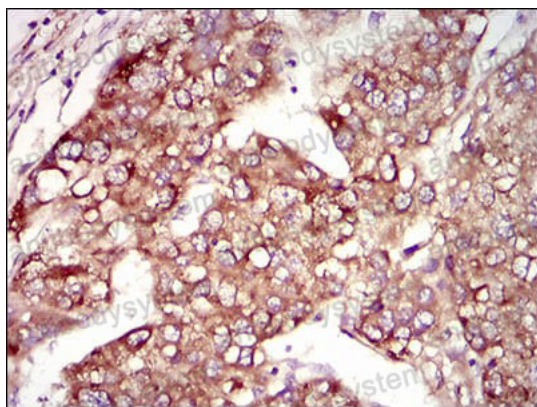
For research use only.

Data Image



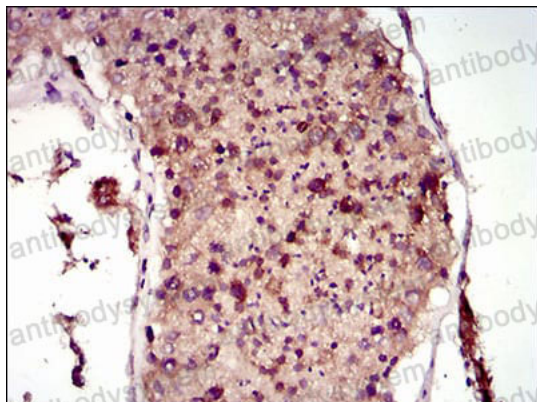
Flow Cytometry

Flow cytometric analysis of HeLa cells using MAP1LC3A mouse mAb (green) and negative control (purple).



Immunohistochemical

Immunohistochemical analysis of paraffin-embedded human liver cancer tissues using MAP1LC3A mouse mAb with DAB staining.



Immunohistochemical

Immunohistochemical analysis of paraffin-embedded human testis tissues using MAP1LC3A mouse mAb with DAB staining.