

Anti-MAP1LC3A Antibody (R3W48)

Summary

Catalog No.	RHJ56806
Clone ID	R3W48
Host species	Mouse
Tested applications	ELISA: 1:10000, FCM: 1:200-1:400
Species reactivity	Human
Form	Liquid
Storage buffer	0.01M PBS, pH 7.4, 0.05% Sodium Azide.
Concentration	1 mg/ml
Purity	>95% as determined by SDS-PAGE.
Clonality	Monoclonal
Isotype	IgG2a
Applications	ELISA, FCM
Target	Autophagy-related protein LC3 A, Autophagy-related ubiquitin-like modifier LC3 A, MAP1 light chain 3-like protein 1, Microtubule-associated protein 1 light chain 3 alpha, MAP1A/MAP1B LC3 A, MAP1LC3A, Microtubule-associated proteins 1A/1B light chain 3A, MAP1A/MAP1B light chain 3 A
Purification	Protein A/G purified from cell culture supernatant.
Endotoxin level	Please contact with the lab for this information.
Accession	Q9H492

Stability and Storage

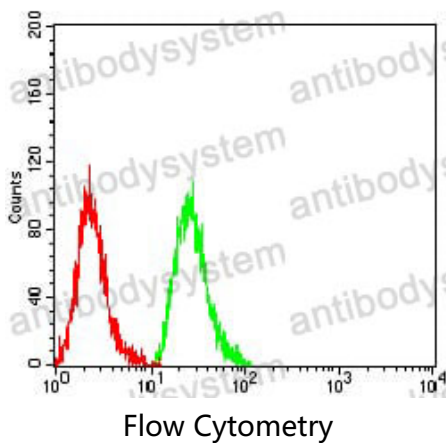
Use a manual defrost freezer and avoid repeated freeze-thaw cycles.

Store at 4°C short term (1-2 weeks). Store at -20°C 12 months. Store at -80°C long term.

Note

For research use only.

Data Image



Flow cytometric analysis of Hela cells using MAP1LC3A mouse mAb (green) and negative control (red).