

Anti-TP63/p40 Antibody (R3W46)

Summary

| | |
|----------------------------|---|
| Catalog No. | RHJ56403 |
| Clone ID | R3W46 |
| Host species | Mouse |
| Tested applications | ELISA: 1:10000, IHC: 1:200-1:1000, WB: 1:500-1:2000 |
| Species reactivity | Human, Mouse, Rat, Monkey |
| Form | Liquid |
| Storage buffer | 0.01M PBS, pH 7.4, 0.05% Sodium Azide. |
| Concentration | 1 mg/ml |
| Purity | >95% as determined by SDS-PAGE. |
| Clonality | Monoclonal |
| Isotype | IgG1 |
| Applications | ELISA, IHC, WB |
| Target | Keratinocyte transcription factor KET, P63, KET, Tumor protein p73-like, p63, P73L, CUSP, P73H, p40, Tumor protein 63, TP73L, Transformation-related protein 63, TP63, Chronic ulcerative stomatitis protein, p73L, p51 |
| Purification | Protein A/G purified from cell culture supernatant. |
| Endotoxin level | Please contact with the lab for this information. |
| Accession | Q9H3D4 |

Stability and Storage

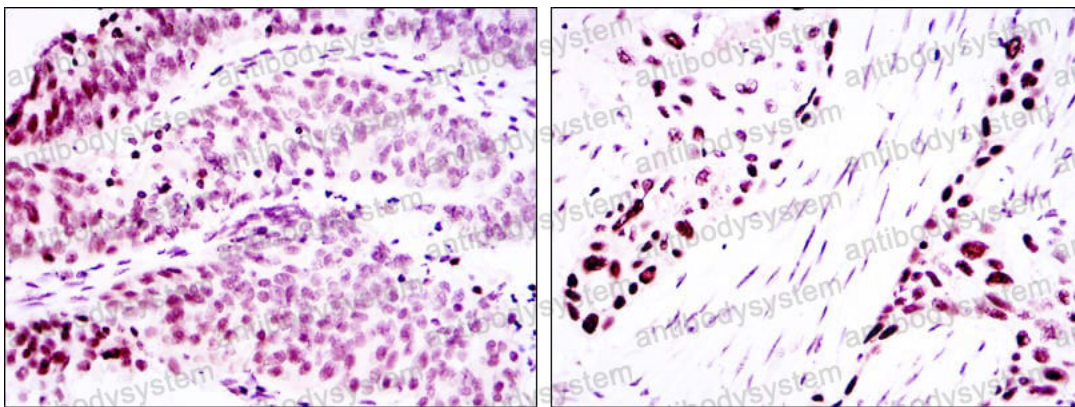
Use a manual defrost freezer and avoid repeated freeze-thaw cycles.

Store at 4°C short term (1-2 weeks). Store at -20°C 12 months. Store at -80°C long term.

Note

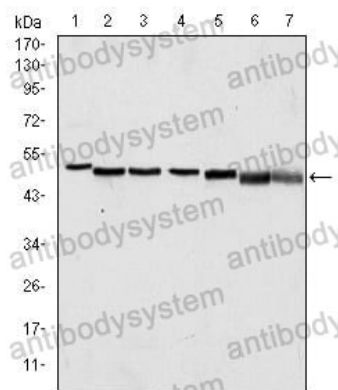
For research use only.

Data Image



Immunohistochemical analysis of paraffin-embedded human ovarian cancer (left) and lung cancer (right) using p63 mouse mAb with DAB staining.

Immunohistochemical



Western blot

Western blot analysis using p63 mouse mAb against A431 (1), Hela (2), Jurkat (3), THP-1 (4), NIH/3T3 (5), Cos7 (6) and PC-12 (7) cell lysate.