

Anti-CD299/CLEC4M Antibody (R3W44)

Summary

Catalog No.	RHJ56001
Clone ID	R3W44
Host species	Mouse
Tested applications	ELISA: 1:10000, FCM: 1:200-1:400, WB: 1:500-1:2000
Species reactivity	Human
Form	Liquid
Storage buffer	0.01M PBS, pH 7.4, 0.05% Sodium Azide.
Concentration	1 mg/ml
Purity	>95% as determined by SDS-PAGE.
Clonality	Monoclonal
Isotype	IgG1
Applications	ELISA, FCM, WB
Target	DC-SIGNR, DC-SIGN2, CLEC4M, DC-SIGN-related protein, C-type lectin domain family 4 member M, CD299, L-SIGN, CD209L, Liver/lymph node-specific ICAM-3-grabbing non-integrin, CD209L1, Dendritic cell-specific ICAM-3-grabbing non-integrin 2, CD209 antigen-like protein 1
Purification	Protein A/G purified from cell culture supernatant.
Endotoxin level	Please contact with the lab for this information.
Accession	Q9H2X3

Stability and Storage

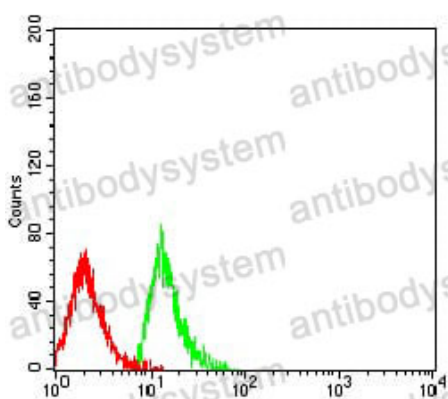
Use a manual defrost freezer and avoid repeated freeze-thaw cycles.

Store at 4°C short term (1-2 weeks). Store at -20°C 12 months. Store at -80°C long term.

Note

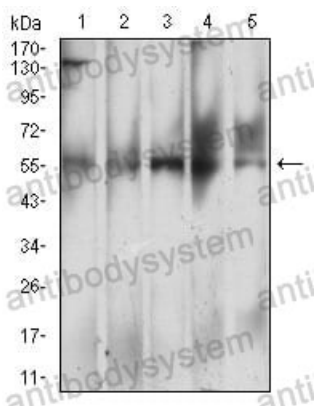
For research use only.

Data Image



Flow Cytometry

Flow cytometric analysis of MOLT4 cells using CD299 mouse mAb (green) and negative control (red).



Western blot

Western blot analysis using CD299 mouse mAb against L-02 (1), HepG2 (2), BEL-7402 (3), SMMC-7702 (4), and HL-7702 (5) cell lysate.