

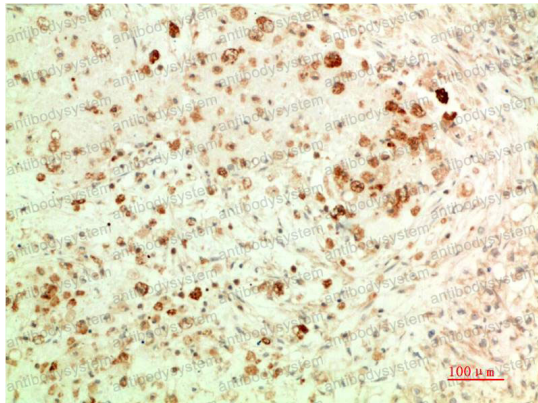
Anti-ATG5 Antibody (R3W38)

Summary

Catalog No.	RHJ55103
Clone ID	R3W38
Host species	Mouse
Tested applications	IHC: 1:50-1:100, WB: 1:500-1:1000
Species reactivity	Human, Mouse, Rat
Form	Liquid
Storage buffer	0.01M PBS, pH 7.4, 0.5% BSA, 0.05% Sodium Azide and 50% Glycerol.
Concentration	1 mg/ml
Purity	>95% as determined by SDS-PAGE.
Clonality	Monoclonal
Isotype	IgG1
Applications	IHC, WB
Target	APG5-like, Apoptosis-specific protein, ASP, APG5L, ATG5, Autophagy protein 5
Purification	Protein A/G purified from cell culture supernatant.
Endotoxin level	Please contact with the lab for this information.
Accession	Q9H1Y0
Stability and Storage	Use a manual defrost freezer and avoid repeated freeze-thaw cycles. Store at 4°C short term (1-2 weeks). Store at -20°C 12 months. Store at -80°C long term.

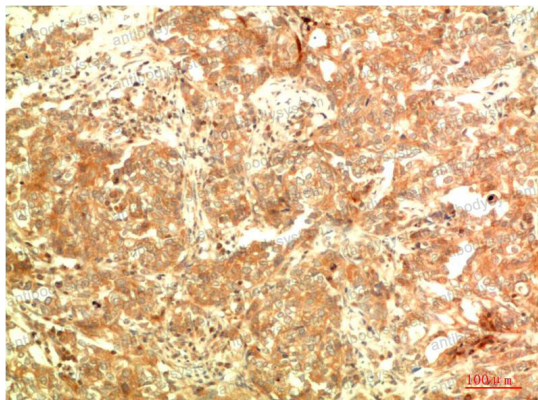
Note For research use only.

Data Image



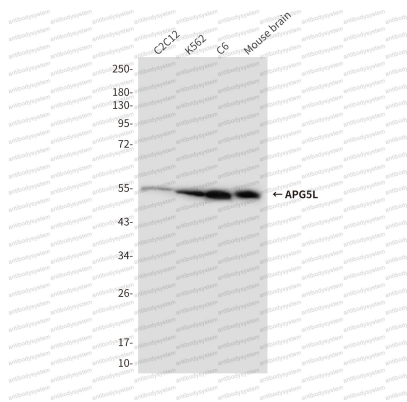
Immunohistochemical

Immunohistochemistry analysis of paraffin-embedded Human Ovarian Carcinoma Tissue using APG5L antibody. High-pressure and temperature Sodium Citrate pH 6.0 was used for antigen retrieval.



Immunohistochemical

Immunohistochemical analysis of paraffin-embedded Human tonsils using APG5L antibody. High-pressure and temperature Sodium Citrate pH 6.0 was used for antigen retrieval.



Western blot

Western blot analysis of APG5L in C2C12, K562, C6, mouse brain lysates using APG5L antibody