

Anti-LAT2 Antibody (R3W34)

Summary

Catalog No.	RHJ53701
Clone ID	R3W34
Host species	Mouse
Tested applications	IHC: 1:20-1:100, IP: 1:100-1:200, WB: 1:500-1:1000
Species reactivity	Human
Form	Liquid
Storage buffer	0.01M PBS, pH 7.4, 0.05% Sodium Azide.
Concentration	1 mg/ml
Purity	>95% as determined by SDS-PAGE.
Clonality	Monoclonal
Isotype	IgG2b
Applications	IHC, IP, WB
Target	NTAL, LAT2, Membrane-associated adapter molecule, WBS15, LAB, WBSCR15, Williams-Beuren syndrome chromosomal region 5 protein, WBSCR5, Non-T-cell activation linker, Linker for activation of T-cells family member 2, Linker for activation of B-cells, Williams-Beuren syndrome chromosomal region 15 protein
Purification	Protein A/G purified from cell culture supernatant.
Endotoxin level	Please contact with the lab for this information.
Accession	Q9GZY6

Stability and Storage

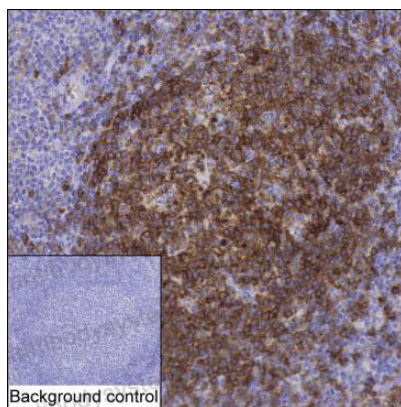
Use a manual defrost freezer and avoid repeated freeze-thaw cycles.

Store at 4°C short term (1-2 weeks). Store at -20°C 12 months. Store at -80°C long term.

Note

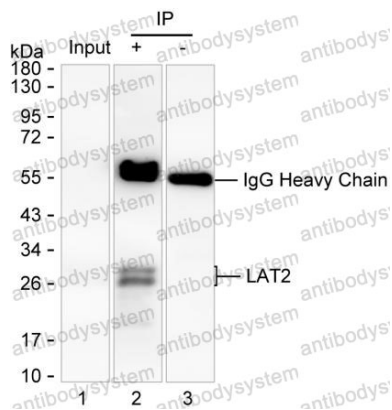
For research use only.

Data Image



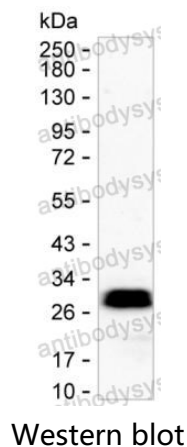
Immunohistochemical

IHC-P analysis of tonsil tissue by LAT2 antibody (RHJ53701). IHC-P was performed using sections of the formalin-fixed paraffin-embedded tonsil tissue; Result: Germinal center cells and non-germinal center cells are positively stained at the cytoplasm and membrane.



Immunoprecipitation

Lane 1: U-937 lysate ; Lane 2: LAT2 immunoprecipitated from U-937 lysate by RHJ53701; Lane 3: The same as Lane 2 but use IgG isotype control antibody ; Result: RHJ53701 can immunoprecipitate LAT2;



Western blot analysis using LAT2 mouse mAb
against U-937 lysate