

Anti-LC3B Antibody (R3W32)

Summary

Catalog No.	RHJ53202
Clone ID	R3W32
Host species	Mouse
Tested applications	IHC: 1:50-1:100
Species reactivity	Human
Form	Liquid
Storage buffer	0.01M PBS, pH 7.4, 0.5% BSA, 0.05% Sodium Azide and 50% Glycerol.
Concentration	1 mg/ml
Purity	>95% as determined by SDS-PAGE.
Clonality	Monoclonal
Isotype	IgG1
Applications	IHC
Target	MAP1A/MAP1B light chain 3 B, MAP1 light chain 3-like protein 2, MAP1ALC3, MAP1LC3B, Autophagy-related protein LC3 B, Microtubule-associated protein 1 light chain 3 beta, Microtubule-associated proteins 1A/1B light chain 3B, Autophagy-related ubiquitin-like modifier LC3 B, MAP1A/MAP1B LC3 B
Purification	Protein A/G purified from cell culture supernatant.
Endotoxin level	Please contact with the lab for this information.
Accession	Q9GZQ8

Recombinant Proteins & Antibodies

Stability and Storage

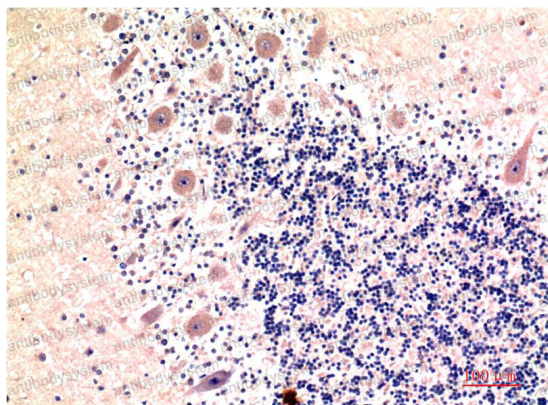
Use a manual defrost freezer and avoid repeated freeze-thaw cycles.

Store at 4°C short term (1-2 weeks). Store at -20°C 12 months. Store at -80°C long term.

Note

For research use only.

Data Image



Immunohistochemical

Immunohistochemistry analysis of paraffin-embedded Human Brain Tissue using LC3B antibody. High-pressure and temperature Sodium Citrate pH 6.0 was used for antigen retrieval.