

Anti-LC3B Antibody (R3W31)

Summary

Catalog No.	RHJ53201
Clone ID	R3W31
Host species	Mouse
Tested applications	ELISA: 1:10000, FCM: 1:200-1:400, IF: 1:50-1:100, IHC: 1:50-1:100
Species reactivity	Human, Mouse, Rat, Monkey
Form	Liquid
Storage buffer	0.01M PBS, pH 7.4, 0.05% Sodium Azide.
Concentration	1 mg/ml
Purity	>95% as determined by SDS-PAGE.
Clonality	Monoclonal
Isotype	IgG1
Applications	ELISA, FCM, IF, IHC
Target	MAP1A/MAP1B light chain 3 B, MAP1 light chain 3-like protein 2, MAP1ALC3, MAP1LC3B, Autophagy-related protein LC3 B, Microtubule-associated protein 1 light chain 3 beta, Microtubule-associated proteins 1A/1B light chain 3B, Autophagy-related ubiquitin-like modifier LC3 B, MAP1A/MAP1B LC3 B
Purification	Protein A/G purified from cell culture supernatant.
Endotoxin level	Please contact with the lab for this information.
Accession	Q9GZQ8

Stability and Storage

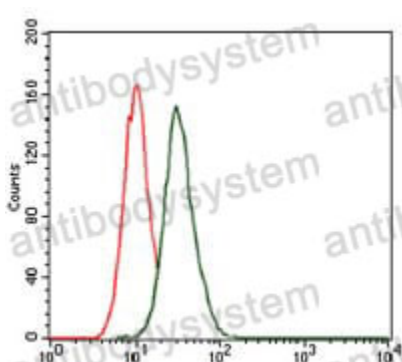
Use a manual defrost freezer and avoid repeated freeze-thaw cycles.

Store at 4°C short term (1-2 weeks). Store at -20°C 12 months. Store at -80°C long term.

Note

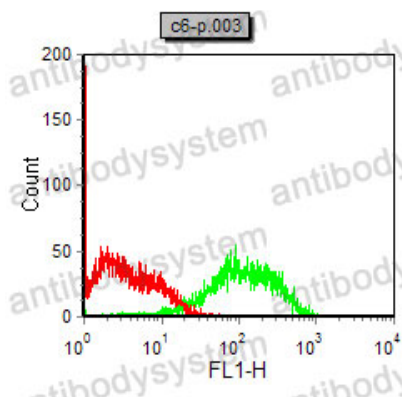
For research use only.

Data Image



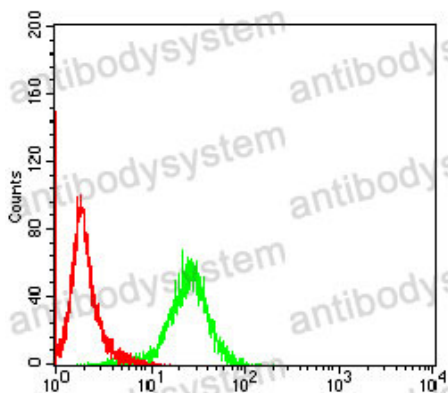
Flow Cytometry

Flow cytometric analysis of HeLa cells using MAP1LC3B mouse mAb (green) and negative control (red).



Flow Cytometry

Flow cytometric analysis of C6 cells using MAP1LC3B mouse mAb (green) and negative control (red).



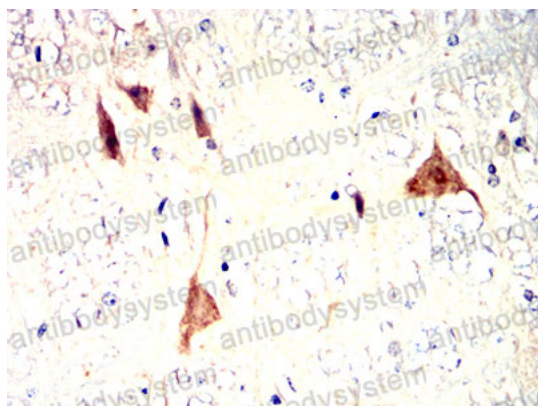
Flow Cytometry

Flow cytometric analysis of NIH/3T3 cells using MAP1LC3B mouse mAb (green) and negative control (red).



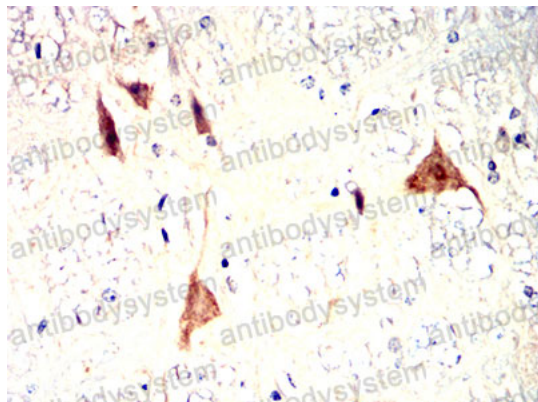
Immunofluorescence

Immunofluorescence analysis of HeLa cells using MAP1LC3B mouse mAb (green). Blue: DRAQ5 fluorescent DNA dye. Red: Actin filaments have been labeled with Alexa Fluor- 555 phalloidin.



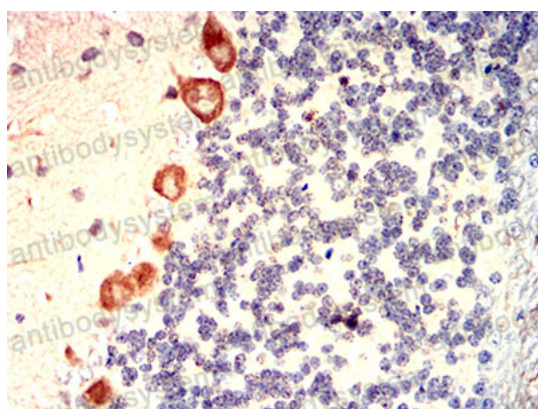
Immunohistochemical

Immunohistochemical analysis of paraffin-embedded Mouse cerebellum using MAP1LC3B mouse mAb with DAB staining.



Immunohistochemical

Immunohistochemical analysis of paraffin-embedded Mouse cerebellum using MAP1LC3B mouse mAb with DAB staining.



Immunohistochemical

Immunohistochemical analysis of paraffin-embedded Rat cerebellum using MAP1LC3B mouse mAb with DAB staining.