

Anti-CD244 Antibody (R3W28)

Summary

| | |
|----------------------------|--|
| Catalog No. | RHJ52601 |
| Clone ID | R3W28 |
| Host species | Mouse |
| Tested applications | ELISA: 1:10000, FCM: 1:200-1:400 |
| Species reactivity | Human |
| Form | Liquid |
| Storage buffer | 0.01M PBS, pH 7.4, 0.05% Sodium Azide. |
| Concentration | 1 mg/ml |
| Purity | >95% as determined by SDS-PAGE. |
| Clonality | Monoclonal |
| Isotype | IgG2b |
| Applications | ELISA, FCM |
| Target | SLAM family member 4, SLAMF4, h2B4, Signaling lymphocytic activation molecule 4, Natural killer cell receptor 2B4, NKR2B4, NAIL, NK cell type I receptor protein 2B4, CD244, NK cell activation-inducing ligand, 2B4 |
| Purification | Protein A/G purified from cell culture supernatant. |
| Endotoxin level | Please contact with the lab for this information. |
| Accession | Q9BZW8 |

Stability and Storage

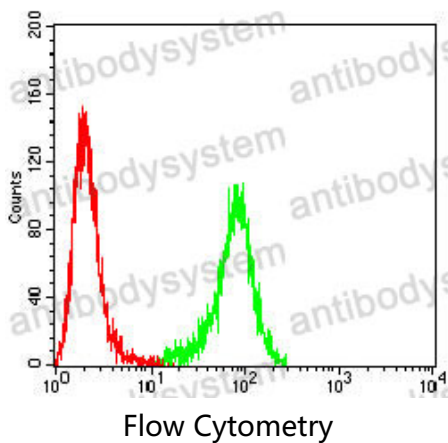
Use a manual defrost freezer and avoid repeated freeze-thaw cycles.

Store at 4°C short term (1-2 weeks). Store at -20°C 12 months. Store at -80°C long term.

Note

For research use only.

Data Image



Flow cytometric analysis of THP-1 cells using CD244 mouse mAb (green) and negative control (red).