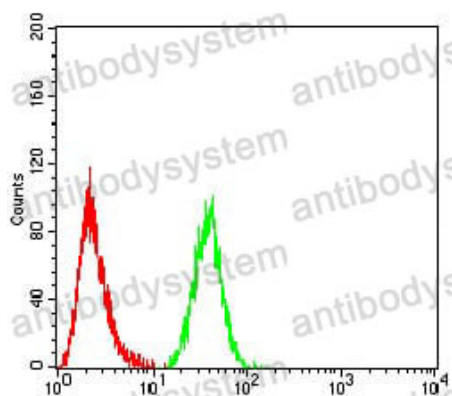


Anti-FOXP3 Antibody (R3W25)

Summary

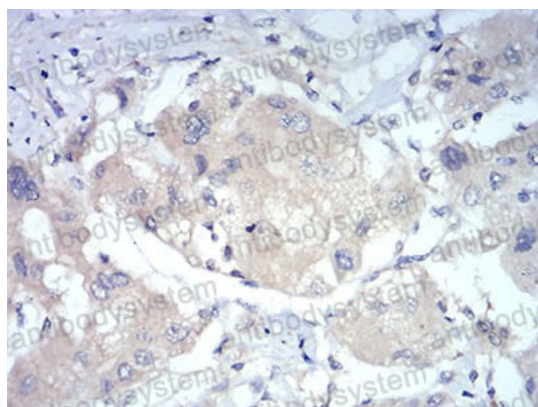
Catalog No.	RHJ52502
Clone ID	R3W25
Host species	Mouse
Tested applications	ELISA: 1:10000, FCM: 1:200-1:400, IHC: 1:100-1:500, WB: 1:500-1:2000
Species reactivity	Human, Mouse, Rabbit
Form	Liquid
Storage buffer	0.01M PBS, pH 7.4, 0.05% Sodium Azide.
Concentration	1 mg/ml
Purity	>95% as determined by SDS-PAGE.
Clonality	Monoclonal
Isotype	IgG1
Applications	ELISA, FCM, IHC, WB
Target	Forkhead box protein P3, IPEX, Scurfin, FOXP3
Purification	Protein A/G purified from cell culture supernatant.
Endotoxin level	Please contact with the lab for this information.
Accession	Q9BZS1
Stability and Storage	Use a manual defrost freezer and avoid repeated freeze-thaw cycles. Store at 4°C short term (1-2 weeks). Store at -20°C 12 months. Store at -80°C long term.
Note	For research use only.

Data Image



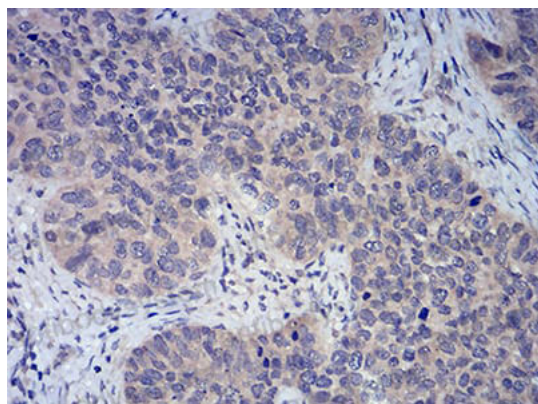
Flow Cytometry

Flow cytometric analysis of HeLa cells using FOXP3 mouse mAb (green) and negative control (red).



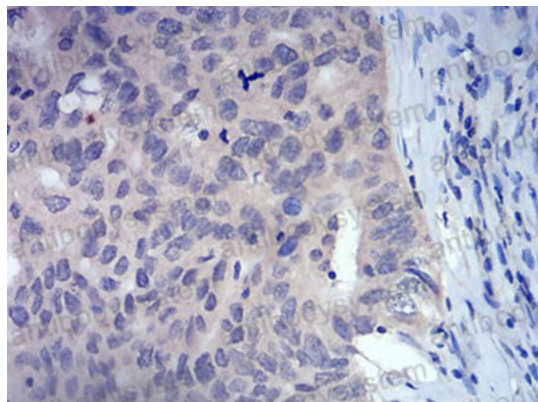
Immunohistochemical

Immunohistochemical analysis of paraffin-embedded human liver cancer tissues using FOXP3 mouse mAb with DAB staining.



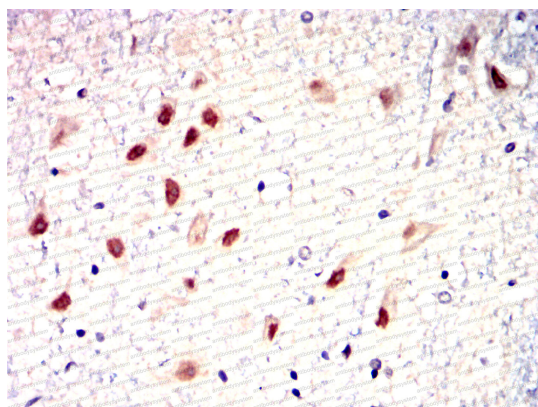
Immunohistochemical

Immunohistochemical analysis of paraffin-embedded human cervical cancer tissues using FOXP3 mouse mAb with DAB staining.



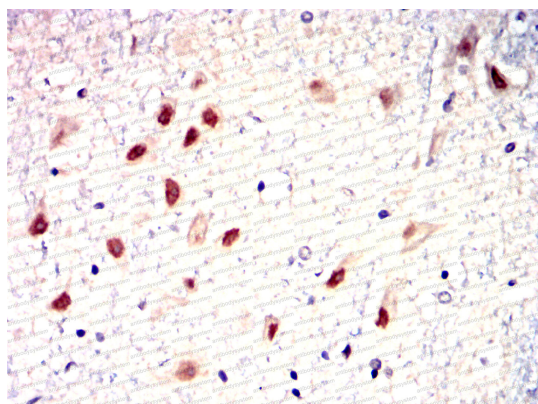
Immunohistochemical

Immunohistochemical analysis of paraffin-embedded human ovarian cancer tissues using FOXP3 mouse mAb with DAB staining.



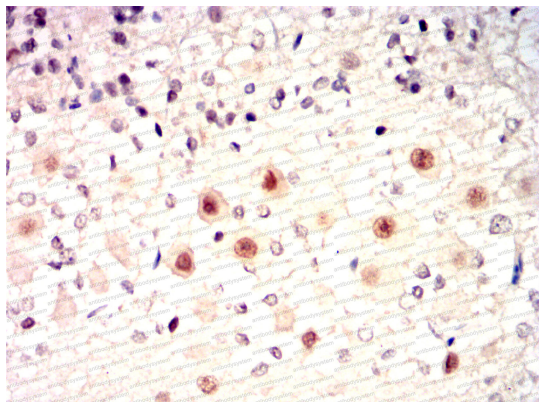
Immunohistochemical

Immunohistochemical analysis of paraffin-embedded Rabbit spinal cord using FOXP3 mouse mAb with DAB staining.



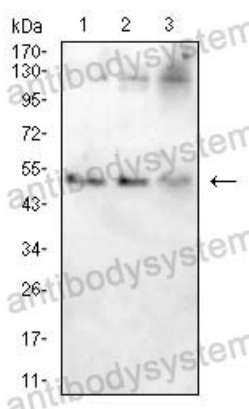
Immunohistochemical

Immunohistochemical analysis of paraffin-embedded Rabbit spinal cord using FOXP3 mouse mAb with DAB staining.



Immunohistochemical analysis of paraffin-embedded Rabbit cerebellum using FOXP3 mouse mAb with DAB staining.

Immunohistochemical



Western blot analysis using FOXP3 mouse mAb against C2C12(1) HeLa(2) Jurkat(3) cell lysate.

Western blot