

Anti-ACE2 Antibody (R3W22)

Summary

Catalog No.	RHJ51603
Clone ID	R3W22
Host species	Mouse
Tested applications	IHC: 1:100-1:200, WB: 1:500-1:1000
Species reactivity	Human
Form	Liquid
Storage buffer	0.01M PBS, pH 7.4, 0.05% Sodium Azide.
Concentration	1 mg/ml
Purity	>95% as determined by SDS-PAGE.
Clonality	Monoclonal
Isotype	IgG1
Applications	IHC, WB
Target	Angiotensin-converting enzyme homolog, ACE2, ACEH, Metalloprotease MPROT15, Angiotensin-converting enzyme-related carboxypeptidase, Angiotensin-converting enzyme 2, ACE-related carboxypeptidase
Purification	Protein A/G purified from cell culture supernatant.
Endotoxin level	Please contact with the lab for this information.
Accession	Q9BYF1

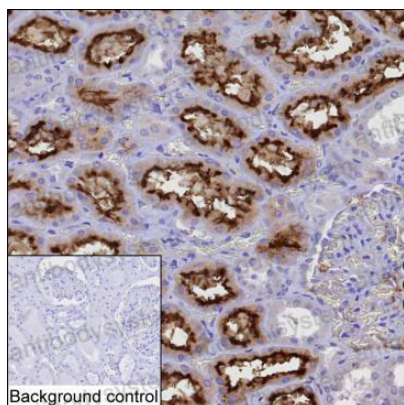
Stability and Storage

Use a manual defrost freezer and avoid repeated freeze-thaw cycles.

Store at 4°C short term (1-2 weeks). Store at -20°C 12 months. Store at -80°C long term.

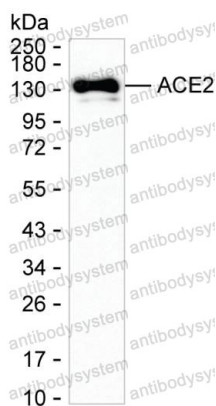
Note

For research use only.

Data Image

Immunohistochemical

IHC-P analysis of kidney tissue by ACE2 antibody (RHJ51603). IHC-P was performed using sections of the formalin-fixed paraffin-embedded kidney tissue; Result: Microvillus of cells in tubules are positively stained.



Western blot

Western blot analysis using ACE2 mouse mAb against Calu-3 lysate