

Anti-CD273/PD-L2/PDCD1LG2 Antibody (R3W14)

Summary

Catalog No.	RHJ48503
Clone ID	R3W14
Host species	Mouse
Tested applications	ELISA: 1:10000, FCM: 1:200-1:400
Species reactivity	Human
Form	Liquid
Storage buffer	0.01M PBS, pH 7.4, 0.05% Sodium Azide.
Concentration	1 mg/ml
Purity	>95% as determined by SDS-PAGE.
Clonality	Monoclonal
Isotype	IgG2a
Applications	ELISA, FCM
Target	PDCD1 ligand 2, B7-DC, PD-L2, PDCD1LG2, PDCD1L2, PDL2, Butyrophilin B7-DC, Programmed death ligand 2, Programmed cell death 1 ligand 2, CD273, B7DC, PD-1 ligand 2
Purification	Protein A/G purified from cell culture supernatant.
Endotoxin level	Please contact with the lab for this information.
Accession	Q9BQ51

Stability and Storage

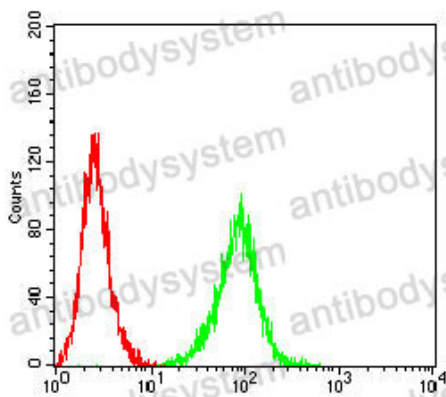
Use a manual defrost freezer and avoid repeated freeze-thaw cycles.

Store at 4°C short term (1-2 weeks). Store at -20°C 12 months. Store at -80°C long term.

Note

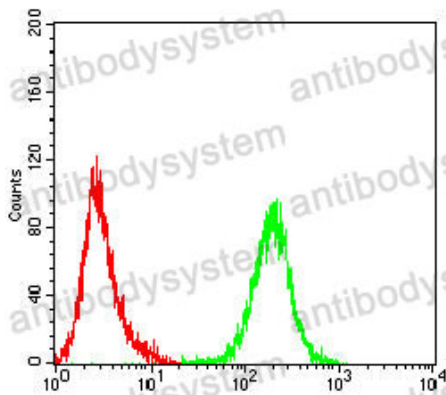
For research use only.

Data Image



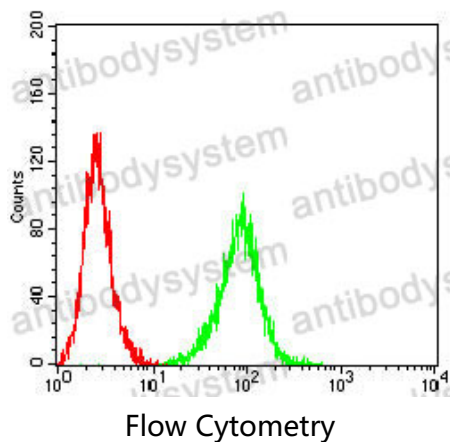
Flow Cytometry

Flow cytometric analysis of Hela cells using CD273 mouse mAb (green) and negative control (red).



Flow Cytometry

Flow cytometric analysis of Jurkat cells using CD273 mouse mAb (green) and negative control (red).



Flow cytometric analysis of K562 cells using CD273 mouse mAb (green) and negative control (red).