

Anti-CIB1 Antibody (R3W13)

Summary

Catalog No.	RHJ47201
Clone ID	R3W13
Host species	Mouse
Tested applications	IHC: 1:200-1:1000, WB: 1:500-1:2000
Species reactivity	Human
Form	Liquid
Storage buffer	0.01M PBS, pH 7.4, 0.05% Sodium Azide.
Concentration	1 mg/ml
Purity	>95% as determined by SDS-PAGE.
Clonality	Monoclonal
Isotype	IgG1
Applications	IHC, WB
Target	CIBP, CIB1, Calcium- and integrin-binding protein, Calcium and integrin-binding protein 1, KIP, SIP2-28, DNA-PKcs-interacting protein, PRKDCIP, Calmyrin, CIB, Kinase-interacting protein, SNK-interacting protein 2-28
Purification	Protein A/G purified from cell culture supernatant.
Endotoxin level	Please contact with the lab for this information.
Accession	Q99828

Stability and Storage

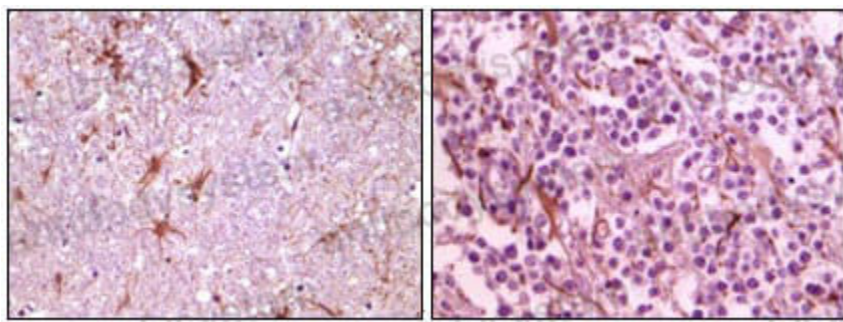
Use a manual defrost freezer and avoid repeated freeze-thaw cycles.

Store at 4°C short term (1-2 weeks). Store at -20°C 12 months. Store at -80°C long term.

Note

For research use only.

Data Image



Immunohistochemical analysis of paraffin-embedded human thalamus (left) and glioma (right) tissue, showing membrane localization using CIB1 mouse mAb with DAB staining.

Immunohistochemical